



KENMERE CHAROLAIS

9th ANNUAL ON PROPERTY BULL SALE

“Moorak” Rankins Lane, Holbrook NSW



Bull videos online

www.kenmerecharolais.com.au

Friday 11th March 2022

Sale commences 1pm

45 Bulls
featuring

**13 HOMOZYGOUS
POLL BULLS**

Welcome 2022

Kenmere Charolais welcomes everyone to attend our 9th Annual Bull Sale at "Moorak" Rankins Lane, Holbrook, NSW. We are delighted to offer this draft of bulls included in our sale catalogue

For NSW overall 2021 spring was the fourth wettest since national records began in 1900. There were a number of NSW Districts that received the wettest season ever. It does appear through NSW everyone received enough rain to see green grass and pasture throughout the State. What has surprised most cattlemen is the level of demand and the escalation of prices that have been recorded in the January weaner sales in Southern Australia. We certainly look forward to the continuation of the current cattle pricing for the future of the industry.

Our sale this year we have 45 bulls for sale that comprise 39 bulls bred from eight Kenmere sires and 6 bulls bred from International and Australian AI Sires.

Kenmere Chock N20E is a new Heterozygous Poll son of the legendary Kenmere Chock E12E. N20E has 78 progeny on the ground and they are calves that are inheriting the carcass traits of their sire who when he was scanned in 2019 recorded Rib fat 15, Rump fat 8, EMA 131, IMF 4.8 and scrotal 42. When we look closely at the N20E sons in the sale you will see the carcass traits and extra bone and muscle in his progeny visible. We are also impressed with the quality of the female progeny.

The draft includes the second drop of Kenmere Maximus M19E a homozygous son of LT Long Distance who has bred 189 progeny in our herd. His progeny are low birth weight and are born easily, commence growing quickly and catch up by the time calves are weaned. Maximus has set the standard for calving ease in the Kenmere herd. We have sold 19 Maximus sons under auction and we are confident he has a long breeding career ahead of him.

Amongst our International sires group are bulls bred from LT Long Distance, Gerard Montezuma, Pinay and Rio Bravo and they are worthy of your inspection.

All our 400 day scan data on the bulls being offered for sale was recorded on 8th November, 2021 that was the date the group came off grass. After that date the group has been prepared for the annual sale.

Our stud has a strong track record of performance recording and we are a member of BREEDPLAN. We hold a Five Star rating awarded as a result of methodical observations recording data and timely submissions to ABRI. The herd averages include data that has been collected over the last sixteen years. We acknowledge that EBV figures can be a useful guide and understand there are many factors you need to consider when choosing your sale bull.

Kenmere is a J BAS 7 status with a Pesti Virus free herd and we have a consistently strong record of animal health status within our herds and we record scan data on both our bulls and heifers.

The applicable COVID prevailing rules will apply at the 2022 sale. You will be required to register on arrival. Social Distancing inside the shed will also be applied unless the regulations have been relaxed by sale day. For sale day safety precautions, all sale bulls will be penned on the sale day. Purchasers should be aware that they enter the cattle pens at their own risk. Children are not allowed to enter the pens.



All bulls will be available for inspection prior to the sale by appointment

at Holbrook by contacting Ann-Marie Collins 0412 608 043 or Matt Collins 0412 265 017

www.kenmerecharolais.com.au



KENMERE CHAROLAIS

9th ANNUAL ON PROPERTY BULL SALE

“Moorak” Rankins Lane, Holbrook NSW

Friday 11th March 2022

Inspection 10.00am

Sale commences 1.00pm

Lunch, Tea & Coffee provided



45 Bulls



Kenmere Charolais

Ann-Marie Collins 0412 608 043

Matt Collins 0412 265 017

www.kenmerecharolais.com.au

Nutrien
Livestock™



Rodwells
A RURALCO BUSINESS

Peter Godbolt: 0457 591 929
Tim Woodham 0436 015 115

Peter Ruaro: 0447 600 825
Scott Campbell 0428 686 072

Kenmere Sale Bulls

Kenmere Sale Bulls

Kenmere Charolais specialises in the production of small numbers of quality bulls that are typically early finishing bulls suitable for both the Stud and Commercial cattleman. The scale of production enables us to concentrate on the traits we believe are important for producers to maximise profits from their progeny.

The real drivers for a profitable calf drop are live calves born early every year. At Kenmere we concentrate on calf shape, lower birth weight and short gestation as well as finishing ability and temperament.

There has been a strong focus on the finishing ability of the herd over many years. This includes using EBV's and scanning progeny for Rib and Rump fat and Marbling as well as proving our genetics in our own vealer production enterprise at Cookardinia. Charolais are high performance cattle so you will still get a weight boost in the progeny even if the bull hasn't got high growth EBV's within the breed.

The bulls on offer have been bred from Kenmere Stud Sires and several International AI Sires. All the sires have been individually selected to join with Kenmere dams that comprise the backbone of our stud. At Kenmere our breeding programs are carried out on farm in order to retain control over the total operation including the hand selection of recipients and to help maintain the integrity of our JBAS 7 status.

The bull scanning provides an indication on the animal itself and should be closely considered during your evaluation. The most important assessment should be your visual inspection to look at the physical traits that you are seeking.

Disclaimer : People entering onto this property for any purpose whatsoever including attendance at cattle auctions do so at their own risk. We are not liable to you for any personal injury or death suffered by you and for theft loss or damage to any property caused or contributed to by us or by any other person whether caused or contributed to by or by negligence deliberate act or unlawful conduct. "We" or "us" or "our" refer to the owners their employees contractors and agents and each of them. While every care has been taken in compiling this catalogue to ensure accuracy of information supplied no responsibility is accepted for any errors which may have occurred.

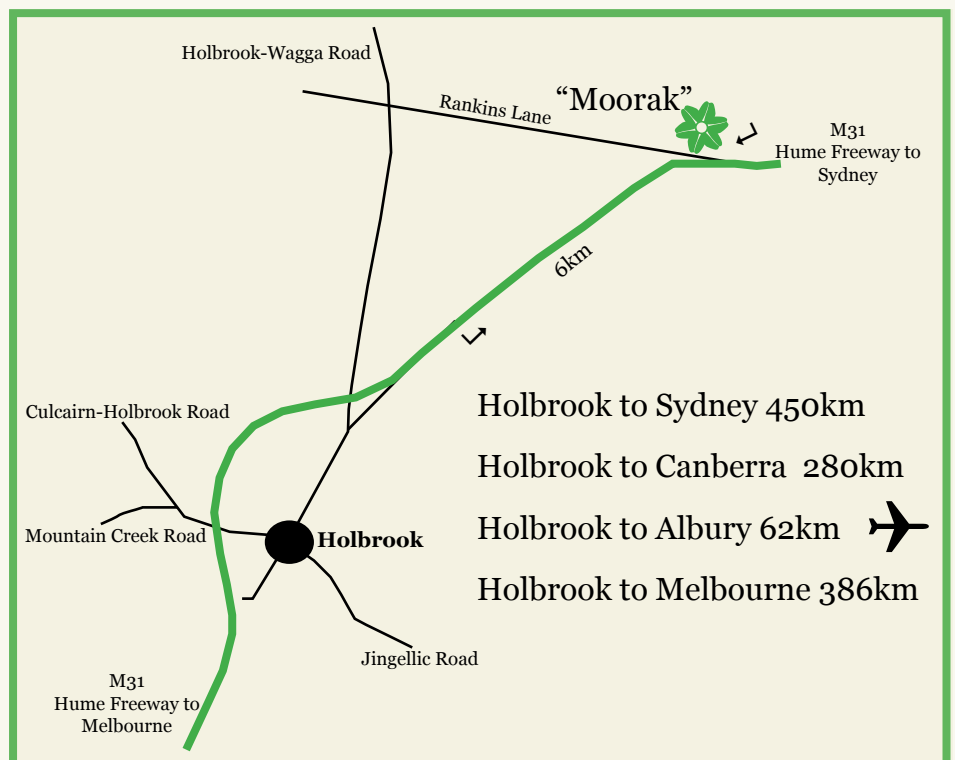
Kenmere Sale Bulls Preparation

This group of bulls were weaned straight onto pasture. They continued to be raised on pasture until approximately 90 days prior to the sale. They were then supplemented with a pellet ration to ensure they are ready to go out to work after sale day.

A 400 day or 600 day weight and the first set of scan data (fat -rib & rump measurements, eye muscle area & marbling) was collected in November by Bovine Scanning Services, prior to the bulls going on any supplementary feed. This data was submitted to Breedplan to create more accurate carcass figures on the bulls. Breedplan will only accept one set of scan data therefore there's no supplementary feeding influencing these figures.

A pre-sale scan, weight and scrotal measurement will be taken in February to assist buyers in comparing the bulls. The bulls have a lifetime vaccination history and have received a booster shot of 7in1 and were drenched in January. They will also receive double vaccinations of Pestigard and Vibrovax prior to sale.

All sale bulls have had a DNA sample analysed and the bulls have all been Sire Verified and horn/poll tested. There are 13 Homozygous Polled bulls in the sale draft. Holbrook Vet Clinic will conduct a structural assessment of each bull prior to sale and a semen test will be done to ensure the bulls are ready to work from the day they leave Kenmere Charolais.



Sale Information

Inspection: Inspections by appointment are welcome prior to sale with the listed agents, Ann-Marie or Matt Collins. Bulls will be on display from 10am on Sale day.

Lunch: Will be available on the day

Health: All catalogued sale bulls have been semen tested and examined for structural soundness by Holbrook Veterinary Centre. The bulls have received booster shots of 7in1, pour on drench and double vaccinations of Pestigard and Vibrovax prior to sale. All sale bulls have been DNA tested and are all PI negative.

Johne's Beef Assurance Score (J-BAS)

Kenmere has enrolled in J-BAS 7 specifically in relation to Johne's Disease and the relevant procedures for cattle. Our registered approved veterinarian has overseen the development of our bio-security plan and we have completed the triennial check test that returned negative results to Johne's disease when tested by an approved laboratory.

Raw Data: All bulls will have Scan Data available prior to the sale for eye muscle area (EMA), rump and rib fat, marbling (IMF%) as well as sale weight and scrotal measurement.

Telephone Link-Up: Mobile telephones will be available. Please arrange with the Vendor or Agent to ensure a line number is available.

Terms And Conditions: Terms of the sale are as per Conditions of Sale, NSW Stud Stock. A copy will be available sale day.

Insurance: Ownership passes at the fall of the hammer. An insurance representative will be in attendance on Sale day

Guarantee: All bulls have been evaluated for structural soundness and fertility and to the best of our knowledge the bulls are in sound working order at the time of the sale. Any claim against a structural breakdown of any animal must be made in writing and accompanied by a Veterinary Certificate within 6 months of the sale date. The Veterinary report must state that, the bull has not suffered any injury, maltreatment or acquired disease which could have affected his breeding ability since delivery to the purchaser. Any bull failing to breed when joined as a single sire mating within six months of the sale may be either replaced with an animal of similar value or credit made available to the value of the purchase price, minus the salvage value, for use at a future sale. The purchaser will be responsible for any costs incurred. **Strictly –No cash refunds.**

Delivery: A delivery instruction slip must be completed and signed by successful purchasers. Stock awaiting delivery will be held free of charge – all care will be taken, but absolutely no responsibility will be accepted for any injury or loss considered during, as a consequence of, or in relation to any holding.

Transport: Stock carriers will be available at the sale to deliver your bulls. Please provide written instructions to the Sale Agents.

Rebate: 4% rebate will be offered to all agents on the condition that a letter of introduction is received 24 hours prior to the sale or the Agent accompanies the purchaser to the sale and settles on their behalf within 7 days. (This clause will be strictly adhered to).

PLEASE NOTE: It is unethical for anyone to promote, advertise or arrange the sale of any cattle, other than those in this sale on this sale premises.



Buy and Sell stock nationally

Auctionsplus

Auctions plus is an alternative bidding platform option if you cannot attend the sale in person. However it is only available to registered users. We recommend registering as soon as possible at least 48 hours prior to the sale.

Register at www.auctionsplus.com.au

Kenmere History

Kenmere Charolais was established in the early 1970's with original French bloodlines imported via New Zealand to Australia. This provided a genetically sound base from which we could increase numbers and reproduce the quality traits that were associated with Charolais.

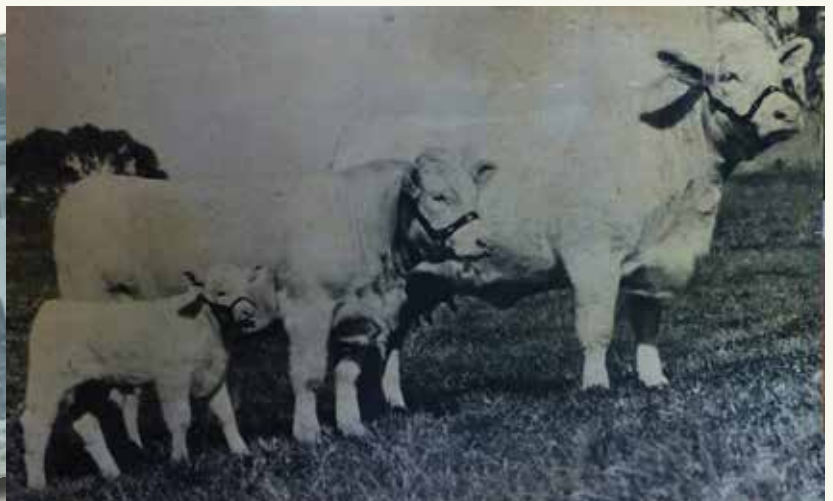
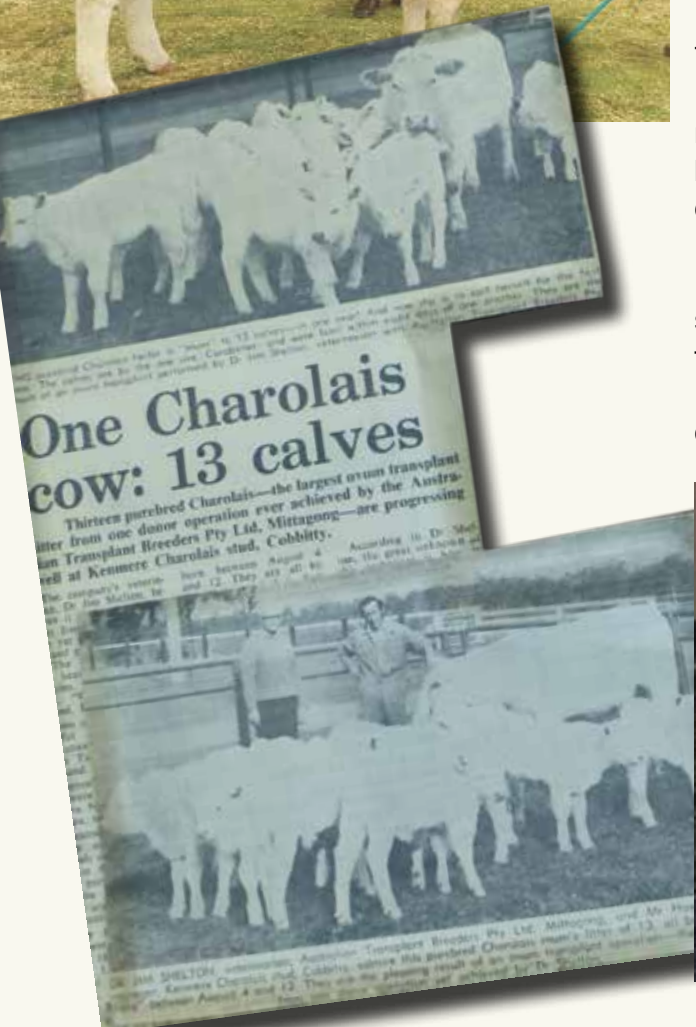
In 1988 John Collins changed the focus of the stud and in 2004 Matthew and Ann-Marie Collins purchased all the cattle and began the work of rebuilding the stud at Cobbitty. The Kenmere females we purchased back enabled us to breed heifers which would become the new foundation herd. We purchased quality heifers from leading studs and many of these had bloodlines that were originally Kenmere genetics.

Ann-Marie became very active in all aspects of the stud particularly in recommencing using the Kenmere dams for embryo transfers. Kenmere Kristina III who was sired by Mandalong Chock and her dam was Gilmandyke Park Kristina II was the first cow to be flushed in the programme.

Gilmandyke Park Kristina II dam was Kenmere Kristina the first pure bred cow bred by Kenmere in New Zealand and transported to Australia. This effectively means we are breeding animals that take us back to pure bred Charolais blood where our breeding commenced.

Today the Kenmere stud is based at Holbrook in Southern NSW where we are specialising in breeding cattle that are moderate framed animals that suit the southern markets with low birth weight, calving ease and early maturing to suit 400 day market grid.

During 2022 we continued to invest in International Charolais sires that carry the traits that the Kenmere cattle production focuses on. We have bred progeny by Lt Nationwide , RBM Fargo , Lt Badge and WC In The Zone and look forward to offering progeny from these sires in the near future.





Matthew & Ann-Marie Collins



CHAROLAIS BREEDPLAN

January 2022 Charolais BREEDPLAN Breed Avg EBVs for 2020 Born Calves.
Percentile Range available at <http://breedplan.une.edu.au>

	CE DIR	CE DTR	GL	BW	200	400	600	MCW	MILK	SS
EBV	+1.4	+0.7	-2.7	+0.3	+12	+24	+32	+33	+7	+1.1

	CW	EMA	RIB	RUMP	RBV	IMF
EBV	+20	+1.6	+0.3	+0.4	+0.1	+0.2

\$ Index Values

DTI (\$)	NMI (\$)
+\$24	+\$33

All EBVs quoted in this catalogue are Charolais Group Breedplan EBVs and are directly comparable with the EBVs from other Charolais Group Breedplan herds.

EBVs

An animal's breeding value is its genetic merit, half of which will be passed on to its progeny. While we will never know the exact breeding value, for performance traits it is possible to make good estimates. These estimates are called Estimated Breeding Values (EBVs).

Accuracy

Accuracy (%) is based on the amount of performance information available on the animal and its close relatives - particularly the number of progeny analysed. Accuracy is also based on the heritability of the trait and the genetic correlations with other recorded traits. The higher the accuracy value the lower the likelihood of change in the animal's EBV as more information is analysed for that animal or its relatives.

TRAITS

Calving Ease EBVs (%) are based on calving difficulty scores, birth weights and gestation length information. More positive EBVs are favourable and indicate easier calving.

CE % Dir = Direct Calving Ease - The EBV for direct calving ease indicates the influence of the sire on calving ease in purebred females calving at two years of age.

CE % Daughters = Daughters' Calving Ease - The EBV for daughters' calving ease indicates how easily that sire's daughters will calve at two years of age.

Gestation Length EBV (days) is an estimate of the time from conception to the birth of the calf and is based on Artificial Insemination & hand mating records. Lower (negative) Gestation Length EBVs indicate shorter gestation length & therefore easier calving & increased growth after birth.

Birth Weight EBV (kg) is based on the measured birth weight of progeny, adjusted for dam age. The lower the value the lighter the calf at birth and the lower the likelihood of a difficult birth. This is particularly important when selecting sires for use over heifers.

200-Day Growth EBV (kg) is calculated from the weight of progeny taken between 80 and 300 days of age. Values are adjusted to 200 days and for age of dam. This EBV is the best single estimate of an animal's genetic merit for growth to early ages.

400-Day Weight EBV (kg) is calculated from the weight of progeny taken between 301 and 500 days of age, adjusted to 400 days and for age of dam. This EBV is the best single estimate of an animal's genetic merit for yearling weight.

600-Day Weight EBV (kg) is calculated from the weight of progeny taken between 501 and 900 days of age, adjusted to 600 days and for age of dam. This EBV is the best single estimate of an animal's genetic merit for growth beyond yearling age.

Mature Cow Weight EBV (kg) is based on the cow weight when the calf is weighed for weaning, adjusted to 5 years of age. This EBV is an estimate of the genetic difference in cow weight at 5 years of age and is an indicator of growth at later ages and potential feed maintenance requirements of the females in the breeding herd. Steer breeders wishing to grow animals out to a larger weight may also use the Mature Cow Weight EBV.

Milk EBV (kg) is an estimate of an animal's milking ability. For sires, this EBV indicates the effect of the daughter's milking ability, inherited from the sire, on the 200-day weights of her calves. For dams, it indicates her milking ability.

Scrotal Size EBV (cm) is calculated from the circumference of the scrotum taken between 300 and 700 days of age and adjusted to 400 days of age. This EBV is an estimate of an animal's genetic merit for scrotal size. There is also a small negative correlation with age of puberty in female progeny and therefore selection for increased scrotal size will result in reduced age at calving of female progeny.

Eye Muscle Area EBV (sq cm) is calculated from measurements from live animal ultrasound scans and from abattoir carcass data, adjusted to a standard 300 kg carcass. This EBV estimates genetic differences in eye muscle area at the 12/13th rib site of a 300 kg dressed carcass. More positive EBVs indicate better muscling on animals. Sires with relatively higher Eye Muscle Area EBVs are expected to produce better muscled and higher percentage yielding progeny at the same carcass weight than will sires with lower Eye Muscle Area EBVs.

Rib Fat and Rump Fat EBVs (mm) are calculated from measurements of subcutaneous fat depth at the 12/13 rib site and the P8 rump site (from live animal ultrasound scans and from abattoir carcasses) and are adjusted to a standard 300 kg carcass. These EBVs are indicators of the genetic differences in fat distribution on a standard 300 kg carcass. Sires with low, or negative, fat EBVs are expected to produce leaner progeny at any particular carcass weight than will sires with higher EBVs.

Retail Beef Yield EBV (%) indicates genetic differences between animals for retail yield percentage in a standard 300 kg carcass. Sires with larger EBVs are expected to produce progeny with higher yielding carcasses.





Intramuscular Fat EBV (%) is an estimate of the genetic difference in the percentage of intramuscular fat (marbling) at the 12/13th rib site in a 300 kg carcasse. Depending on market targets, larger more positive values are generally more favourable.

Selection Indices

Charolais selection indices are calculated for market specifications, including Southern and Northern markets. Index values are reported as EBVs, in units of relative earning capacity (\$'s) for a given market. They reflect both the short-term profit generated by a sire through the sale of his progeny, and the longer-term profit generated by his daughters in a self-replacing cow herd. A selection index combines the EBVs with economic information (costs and returns) for specific market and production systems to rank animals based on relative profit values. More information is available on selecting animals using a selection index. The Index values are derived using BreedObject technology. More information is available from the BreedObject web site.

Domestic Terminal Index (\$) [DTI]- Estimates the genetic differences between animals in net profitability per cow joined for a typical commercial herd where Charolais bulls are joined with a British breed cow base (e.g. Angus) targeting the domestic trade. This index assumes all progeny will be marketed with steers finished in the feedlot for 90 days, and weighing 450 kg (250 kg HSCW and 7 mm P8 fat depth) when marketed at 12 months. Heifers will be in the feedlot for 75 days, and weigh 430 kg (230 kg HSCW and 9 mm P8 fat depth) at 12 months. In response to industry feedback, positive emphasis has been placed on finishing ability.

Northern Maternal Index (\$) [NMI] – Estimates the genetic differences between animals in net profitability per cow joined for a typical commercial self-replacing herd where Charolais bulls are joined with Bos indicus cows in Northern Australia targeting the grass fed Jap Ox market. Selected heifers are retained for breeding and so maternal traits are of importance. Steers target 650 kg live weight (360 kg HSCW and 12 mm P8 fat depth) and heifers 630 kg (340 kg HSCW and 14 mm P8 fat depth), at 26 months of age. In response to industry feedback; positive emphasis has been placed on finishing ability.



Poll Genetics

Poll Inheritance

Understanding the Horn/Poll status of a bull is important when determining whether a potential new bull meets your breeding objectives. A poll bull can be either 'true polled' (homozygous PP), or is a carrier of horned genetics (heterozygous Ph). The polled variant of the gene (P) is usually dominant to the horned variant of the gene (h), which means polled animals may be either PP or Ph. Homozygous PP animals will always pass a copy of the polled variant to their offspring, increasing the likelihood that the offspring will be polled. Identifying breeding animals that carry two copies of the polled variant will dramatically reduce the requirement for dehorning in subsequent generations. Kenmere have tested via DNA poll animals in this sale to determine their poll status.

Genotype	Status	Explanation
PP Homozygous Polled	Polled	This animal possesses two copies of the polled variant of the gene. This animal is highly likely to be polled and will always pass a poll variant to its progeny.
Ph Heterozygous Polled	Carrier	This animal carries one copy of the polled variant and one copy of the horned variant of the gene. This animal is likely to be polled but in some instances may be scurred or horned. This animal will transmit either the horned or polled variant to its progeny.
hh Homozygous Horned	Horned	This animal carries two copies of the horned variant of the gene. This animal is highly likely to be horned and will always transmit the horned variant to its progeny.

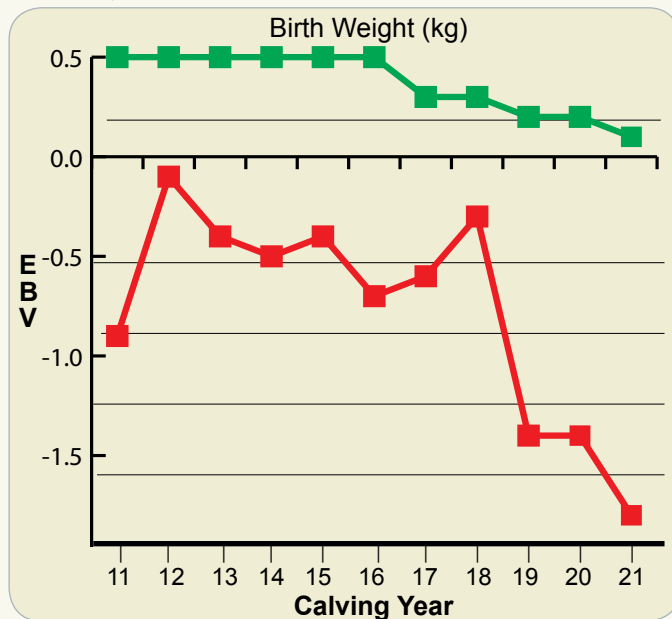
Is polled always dominant to horned?

In Bos taurus breeds, polled is almost always dominant to horned; -PP- animals are always polled and -Ph- animals are usually always polled (they are sometimes scurred). In Bos indicus influenced breeds, such as Brahman and Droughtmaster, this is not necessarily the case. Whilst -PP animals are usually always polled, -Ph- animals can be polled, scurred and sometimes horned. For example, an Angus bull bred to horned Brahman cows will produce offspring that all have a genotype of -Ph- but can be a mixture of polled, scurred and horned. Whilst the vast majority will be polled and scurred, some horned animals are usually observed due to the influence of other genes interacting with the poll gene.

Kenmere Sale Bulls

Homozygous Poll animals in this sale have been DNA tested at Neogen and their Poll Status is indicated where a test result is available.

KENMERE GENETIC TRENDS



Kenmere Genetic Trends for calving traits

The real profit drivers for a profitable calf crop are live calves born early every year!

Birth Weight figures are expressed in kilograms and are calculated from the weights of the calves taken at birth and compared to the other calves in the group.

ALL KENMERE CALVES ARE WEIGHED AT BIRTH giving a great bank of actual data to start to build performance upon. With all bulls being sire verified we can be confident of the pedigree and how we can expect animal to perform and influence his progeny. Lower birth weight figures are generally more desirable.

Gestation Length EBV's are an indicator of the days from conception to birth. This is important to allow cows longer to rebreed and calve on time year upon year as well as having an influence on lowering birth weight. The figure is calculated in days and a lower or lesser figure is more favourable.

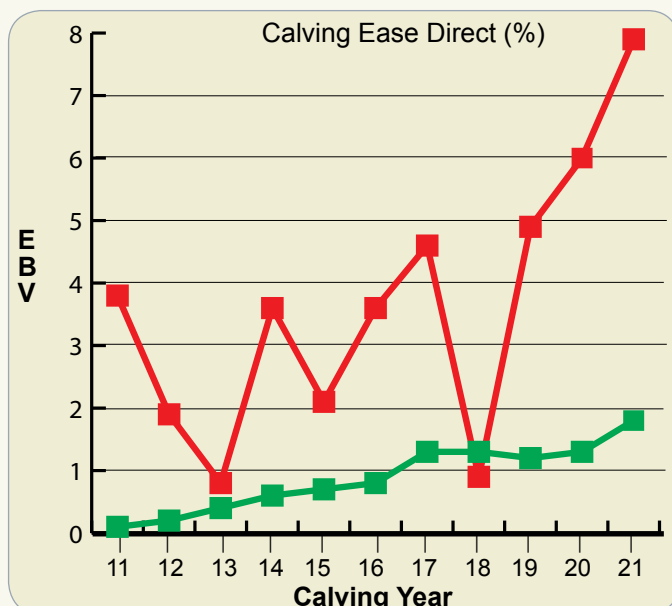
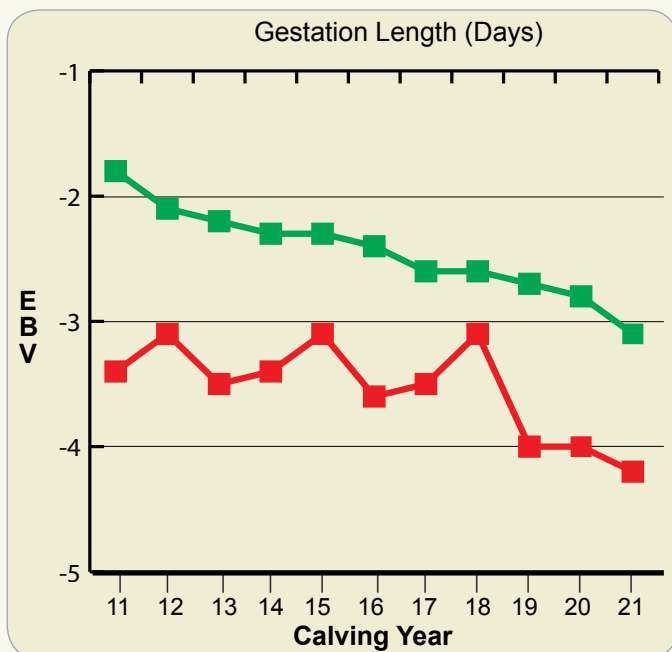
Calving Ease Direct points to the calving ability of the sire's calves to be born unassisted. This means less stress on the cows, giving them a better opportunity to rebreed at the first opportunity. Higher figures are more favourable.

The other factor to keep in mind with reproductive traits, especially when mating maiden heifers is that there will be a trade off in performance when using sires with a really low birth weight figure. This is balanced by having live calves and the ability of Charolais genetics to drive weight gain, especially if you are cross breeding and getting the benefits of hybrid vigour – a win, win and a proven way to get high dollar returns.

As shown in the graphs, the Kenmere herd sits well above the breed average for Calving Ease, well below the breed average on Birth Weight and shorter than the breed average for Gestation Length.

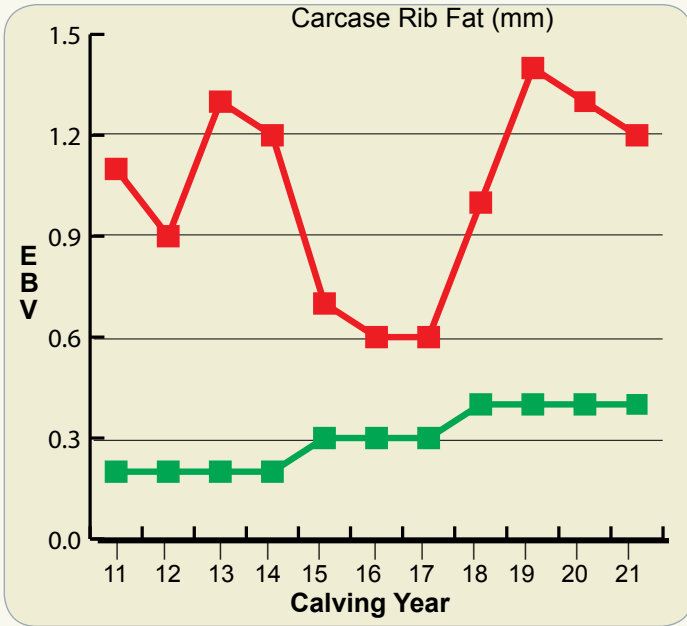
70% of the bulls in this catalogue rate in the top 20% of the breed for Birth weight, Gestation or Calving Ease Direct. The other 30% are bred for mature cow mating's based around carcass and performance traits.

It is not only the individual sire's effect but consistent, repeatable traits in the Kenmere herd as a whole.



■ Kenmere

■ Charolais Breed

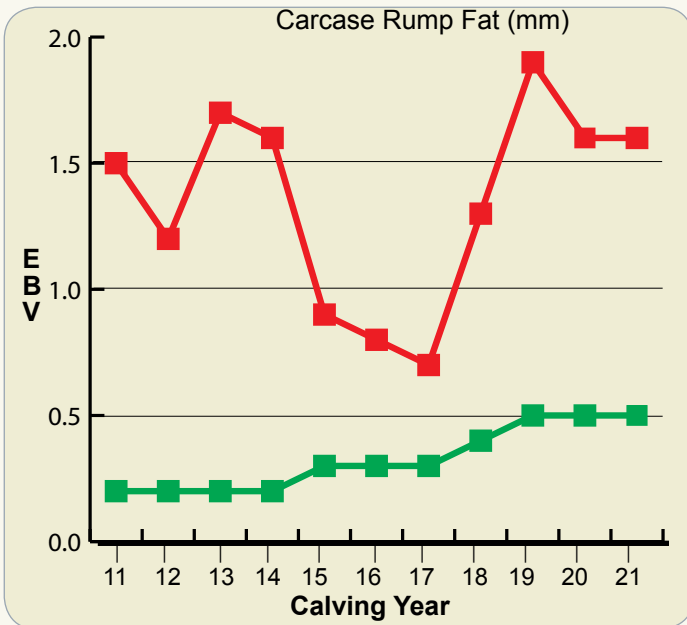


Kenmere Genetic Trends for Rib, Rump and IMF

The benefits of using Charolais genetics for growth and yield coupled with ability of Kenmere bulls to lay down fat and their marbling ability make for a very sound breeding strategy.

Higher Rib and Rump fat is not only beneficial when turning off lines of cattle to fit industry requirements but for females retained that can deal with testing seasonal conditions and maintain a healthy fat score to feed their offspring and rebreed in a short space of time. This is the key to profitable beef production.

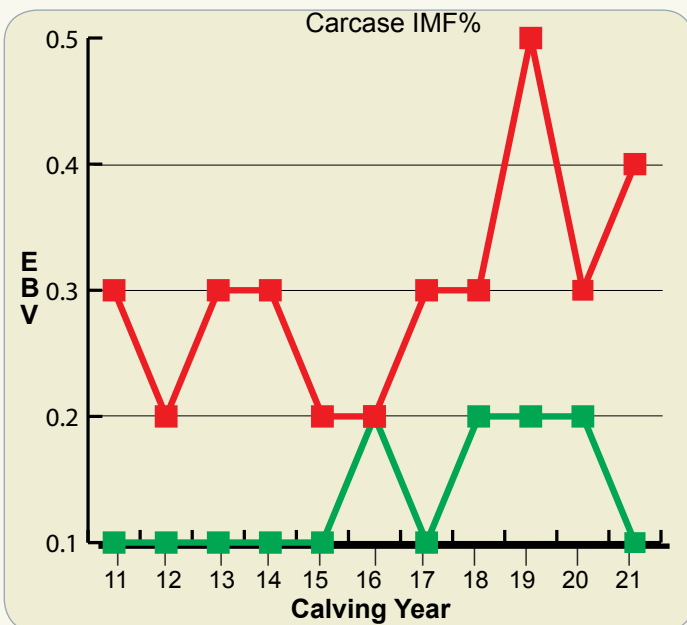
Although the sacrifice value of Charolais cross heifers is every bit as good as their male siblings, the real worth of these females is in their ability to function as highly profitable cows.



With 10 years of solid weighing and scanning data collated on the Kenmere herd of male and female progeny we can map progress of our genetics on traits not always seen by the eye and IMF is certainly one of these. Cattle that can turn grass into high weight gains and a high quality, saleable product has always been the goal for Kenmere Charolais.

Rib Fat EBVs are expressed in millimetres. They estimate the difference in the fat measurement over the rib between animals. The fat measurements that were sent to Breedplan on this set of bulls to produce these EBVs were taken in November 19, off pasture. We view a positive EBV figure to be an advantage as the progeny will be easier to finish.

Rump Fat EBVs are also expressed in millimetres. They estimate the difference in the fat measurement over the rump. Again, we view a positive EBV figure to be an advantage.



Intramuscular Fat (IMF) EBVs are estimates of genetic differences between animals in intramuscular fat (marbling) IMF EBVs are reported as differences in percentage (%) IMF. Higher IMF EBVs are more favourable and can contribute to carcass value. Sixty% of the bulls in this catalogue have Rib, Rump or IMF EBVs in the top 20% of the breed. The other bulls excel in Calving Ease or Muscularity (EMA & RBY)

As shown in the graphs the herd as a whole is built with carcass quality and fattening ability traits which makes for reliability and uniformity.



Kenmere Reference Sires



KENMERE CHOCK N20E (MCS N20E) (P)

Chock N20E is the son of Kenmere Chock E12E that we chose to retain in the stud. He exhibits his sire's length, softness and temperament but he has more performance, combined with a well laid in shoulder, good neck extension and plenty of depth. He has over 60 progeny in the herd and we are proud to offer seven sons in this sale. N20E has rib, rump fat and imf EBV's in the top 1% of the breed.



KENMERE MAXIMUS (MCS M19E) (P)(R/F)

Maximus has been extensively used at Kenmere as our calving ease specialist with over 120 progeny. He reliably produces small, easy born calves with short gestation. He is a homo polled, moderate red factor son of LT Long Distance that is structurally sound and still working in the Stud. His calves have good performance and fat cover regardless of their small start. He has 7 sons in this sale. M19E has the lowest birthweight EBV in the Charolais breed.



KENMERE HERICHIO (MCS H103E) (P)

Herichio is a Kenmere Bred sire who is a trait leader for 400 day weight in the breed. The bull is long bodied with adequate softness. He was the reserve interbreed champion bull at Melbourne Royal Show during his career and the bull has bred progeny that have represented the stud successfully in 2019 and 2020. Herichio should breed meaty bulls with carcass quality that will suit a variety of markets.



KENMERE GARRISON (MCS G9E) (AI)(ET)(P)(R/F)

Kenmere Garrison had a distinguished show record winning ribbons at Royal Canberra, Royal Sydney and Royal Melbourne Show in 2012. Garrison is a red factor Peugeot son who is a polled bull with softness, plenty of muscle, thickness and depth packed into a moderate frame. Garrison's progeny have good temperament and are easy to manage and will grow into evenly balanced cattle that will suit commercially minded cattlemen



KENMERE SYNERGY'S MAN (MCS M40E) (P)

Synergy's Man was retained by Kenmere for stud duties following his show career where he won Junior and Grand Champion Bull at Melbourne Royal Show in 2017. This sire was selected for his rib, rump and milk traits. He is a moderate framed bull packed with even thickness throughout and plenty of muscle expression.



KENMERE NUTRIENT (MCS N131E) (P)

Nutrient is a powerful thick bodied bull who is packed with muscle from head to tail. He stands on heavy bone and has sire head. Kenmere has used Nutrient for breeding steers and replacement females for our commercial business. The progeny are stout animals that grow and finish quickly and typically at the top end of the weights



GERARD MONTEZUMA 6T (OAC C3106E) (P)

Montezuma offers performance, depth, thickness and length in a smooth made eye appealing package. His pedigree is a very solid recipe for productive daughters and sons that will be the highlight of any bull pen



LT LONG DISTANCE 9001 (OAU E143E) (P)

Long Distance is in top 1% for birth weight and calving ease direct, rib and rump fat, IMF, top 5% for Gestation length and top 10% for milk. Kenmere selected this North American Sire for his worldwide acclaim for calving ease and low birthweight. He has a proven reputation for shorter gestations and good calving ease. The structure of the bull and his confirmation selectively suited mating with Kenmere dams.



KENMERE KRISTO'S BOY (MCS N53E) (P)

Kristo's Boy (P) is a polled bull who has been used to breed low birth weight progeny who calve easily and grow quickly and carry the meat quality traits including rib and rump fat and imf that Kenmere focuses on. Kristo Boy's is in the top 1% for birthweight, calving ease direct and top 10% for rib and rump fat

1 KENMERE ROLE MODEL R169E (AI) (ET) (P)

Tattoo: MCS R169E Born: 26/06/2020

LT EASY BLEND 5125 PLD (OAU A5113E) (P)
 KENMERE RADIATOR E90E (MCS E90E) (P)
 MINNIE-VALE RADIANCE B34E (SGS B34E) (P)

SIRE: KENMERE HERICHIO (MCS H103E) (P)

LT WESTERN SPUR 2061 PLD (OAU X2061E) (P)
 KENMERE DIAMOND SPUR D8E (MCS D8E) (P)
 MINNIE-VALE QUEENIE A68E (SGS A68E) (P)

LT ASSERTION 1277 (PED W1277F) (P)
 LT BLUEGRASS 4017P (OAU Z4017E) (P)
 LT PEARLS BREEZE 2236 (PED X2236F) (P)

DAM: KENMERE TINKERBELLE E48E (MCS E48E) (P)

SUMMER KOSCIOSKO (SU K78F)
 KENMERE TINKERBELLE (KNC T60E)
 SUMMER KISS'N'TELL (SU K1E)

Comments: Role Model is an impressive Hericho Son who carries his sire's traits of thick even cover, adequate bone and depth of muscle. The pedigree suggests progeny should be at the heaviest end of the scales on sale day. The dam Kenmere Tinkerbelle E48E has been a sound breeding cow in our herd.
EBV Percentiles: Top 20% GL, 15% BW, 10% Rib & Rump, 10% IMF%

Purchaser:

	CE DIR	CE DTR	GL	BW	200	400	600	MCW	MILK	SS
EBV	+4.9	+2.3	-4.3	-1.6	+6	+14	+13	+10	+4	+0.4
Acc	48%	47%	48%	72%	65%	67%	69%	64%	54%	69%

	CW	EMA	RIB	RUMP	RBY	IMF
EBV	+10	+0.2	+1.7	+2.4	-1.7	+0.7
Acc	58%	49%	54%	53%	52%	49%

\$ Index Values

DTI (\$)	NMI (\$)
+\$14	+\$33



\$:

2 KENMERE REIS R134E (P)

Tattoo: MCS R134E Born: 06/06/2020

LT BLUEGRASS 4017P (OAU Z4017E) (P)
 KENMERE CHOCK E12E (MCS E12E) (P)
 KENMERE KRISTINA III FL87 (MCS M18E)

SIRE: KENMERE CHOCK N20E (MCS N20E) (P)

GOBONGO BOY G196E (GO G196E) (P)
 KENMERE KIKO (MCS K19E) (P)
 KENMERE GRACE (MCS G73E)

LT EASY BLEND 5125 PLD (OAU A5113E) (P)
 KENMERE RADIATOR E90E (MCS E90E) (P)
 MINNIE-VALE RADIANCE B34E (SGS B34E) (P)

DAM: KENMERE QUE SERA L32E (MCS L32E) (P)

LT SILVER VALUE 2122 P (OAU X5761E) (P)
 KENMERE QUE SERA D59E (MCS D59E) (P)
 KENMERE QUE SERA B9E (MCS B9E)

Comments: Reis is a Homozgous Chock N20 son who has inherited a poll sire head with softness and depth of body with plenty of fat cover and abundance of muscle in the rump. This is an impressive sire. **EBV Percentiles: Top 5% CEDTR, 10% 600D, 15% Milk, 15% CW, 5% Rib & Rump, 10% NMI\$**

Purchaser:

	CE DIR	CE DTR	GL	BW	200	400	600	MCW	MILK	SS
EBV	-1.7	+11.1	-4.1	-0.1	+14	+28	+51	+44	+11	+2.4
Acc	48%	39%	48%	73%	66%	68%	71%	64%	48%	74%

	CW	EMA	RIB	RUMP	RBY	IMF
EBV	+27	+0.4	+2.0	+2.5	-1.4	+0.0
Acc	59%	51%	55%	54%	54%	50%

\$ Index Values

DTI (\$)	NMI (\$)
+\$22	+\$65

\$:

HOMOZYGOUS POLL - DNA

3 KENMERE ROLL-BAR R142E (P) (R/F)

Tattoo: MCS R142E Born: 13/06/2020

DBAR SYNERGY 721T (OAC C3100E) (P)
ASHWOOD PARK SYNERGY G29E (HAS G29E) (P)
ASHWOOD PARK ANGEL 2 (HAS D22E) (P)

SIRE: KENMERE SYNERGY'S MAN (MCS M40E) (P)

LT BLUEGRASS 4017P (OAU Z4017E) (P)
KENMERE PING E20E (MCS E20E) (P)
MINNIE-VALE PING A49E (SGS A49E) (P)

NANDILLYAN PEUGEOT (F U1E) (P)
KENMERE GRAND MASTER (MCS G6E) (P)
KENMERE CALAMITY C56E (MCS C56E) (P)

DAM: KENMERE PERLINA K2E (MCS K2E) (P)

KENMERE DAKOTA SPUR D9E (MCS D9E)
KENMERE PERLINA F38E (MCS F38E)
KENMERE PERLINA (MCS P78E+99)

Comments: Roll Bar is a powerful classy Synergy's Man son who has a soft muscle pattern, good shoulder setup, strong top and plenty of depth and length. This sire was selected for his Rib and Rump,EMA,IMF and milk traits. **EBV Percentiles: Top 20% Milk, 15% EMA, 1% Rib & Rump, 10% IMF%.**

	CE DIR	CE DTR	GL	BW	200	400	600	MCW	MILK	SS
EBV	-23.1	-3.5	-2.0	+1.8	+12	+15	+25	+22	+10	+1.2
Acc	50%	46%	53%	74%	67%	69%	72%	66%	51%	75%

	CW	EMA	RIB	RUMP	RBV	IMF
EBV	+9	+2.4	+3.8	+5.0	-1.6	+0.8
Acc	61%	53%	59%	58%	56%	52%

\$ Index Values

DTI (\$)	NMI (\$)
-\$12	-\$12



Purchaser:

\$:

4 KENMERE MONTEZUMA R267E (AI) (P)

Tattoo: MCS R267E Born: 20/09/2020

HFCC PLD EVOLUTION 5L (PED -6316E)
SVY FREEDOM PLD 307N (OAC Y2808E) (P)
SVY PURRFECT 184L (PED -3051E)

SIRE: GERRARD MONTEZUMA 6T (OAC C3106E) (P)

RPJ IMPRESSED 121L (PED -1923E)
GERRARD ROXANNE 18P (PED -4620E)
GERRARD ROXANNE 27M (PED -2435E)

LT WESTERN SPUR 2061 PLD (OAU X2061E) (P)
KENMERE GILMAN KRISTO D17E E (MCS D17E)
KENMERE KRISTINA III FL87 (MCS M18E)

DAM: KENMERE NAVARRO N41E (MCS N41E)

KENMERE RADIATOR E90E (MCS E90E) (P)
KENMERE NAVARRO H64E (MCS H64E) (P)
KENMERE NAVARRO B14E (MCS B14E)

Comments: Kenmere chose this Canadian sire for his compatibility with our genetic type. Kenmere Montezuma R267E has a really well balanced set of EBV's, great scrotal and scan data. The Kenmere Navarro cow family have produced reliable breeders with traits on the right side of the curve. Take a close look at this sire. **EBV Percentiles: Top 15% CEDTR, 5% GL, 5% 400D, 20% 600D, 1% SS, 10% CWT,20% EMA, 1% Rib & Rump, 20% IMF%, 10% DTI\$, 5% NMI\$.**

	CE DIR	CE DTR	GL	BW	200	400	600	MCW	MILK	SS
EBV	+2.5	+5.5	-6.8	+0.7	+11	+39	+46	+53	+7	+2.9
Acc	50%	46%	71%	73%	66%	67%	66%	63%	53%	74%

	CW	EMA	RIB	RUMP	RBV	IMF
EBV	+31	+2.3	+1.6	+2.0	-0.7	+0.5
Acc	59%	53%	56%	56%	55%	54%

\$ Index Values

DTI (\$)	NMI (\$)
+\$36	+\$76



Purchaser:

\$:

5 KENMERE REBATE R255E (P) (R/F)

Tattoo: MCS R255E Born: 14/09/2020

LT SILVER DISTANCE 5342 (OAU A7559E) (P)

LT LONG DISTANCE 9001 (OAU E143E) (P)

LT BELLE 7026 (OAU C9133E) (P)

SIRE: KENMERE MAXIMUS (MCS M19E) (P)

KENMERE GRAND MASTER (MCS G6E) (P)

KENMERE NICOLA J46E (MCS J46E) (P)

KENMERE NICOLA F73E (MCS F73E) (P)

PCC SUDDEN IMPACT 848U (OAC D1017E) (P)

ROSEDALE KOOLY (MR K16E) (P)

ROSEDALE GOLDEN GIRL A34 (MR A34E) (P)

DAM: KENMERE QUE SERA P89E (MCS P89E) (P)

LIBERTY EXHIBITIONIST (Y1K E24E) (P)

KENMERE QUE SERA H34E (MCS H34E) (P)

KENMERE QUE SERA B9E (MCS B9E)

	CE DIR	CE DTR	GL	BW	200	400	600	MCW	MILK	SS
EBV	+9.3	+3.1	-4.7	-1.8	+13	+19	+33	+17	+14	+1.6
Acc	48%	39%	54%	72%	65%	67%	65%	62%	44%	74%

	CW	EMA	RIB	RUMP	RBV	IMF
EBV	+18	+1.4	+1.4	+1.7	-0.8	+0.4
Acc	56%	50%	54%	53%	52%	49%

\$ Index Values	
DTI (\$)	NMI (\$)
+\$26	+\$56

Comments: Rebate is an outstanding bull who has been chosen to lead the draft of the Maximus sons in our sale today. If you are looking for a low birthweight and easy calving bull, take a good look at the frame and carcass on this bull - ideal for producing early finishing progeny. **EBV Percentiles: Top 10% CED, 15% GL, 15% BW, 5% Milk, 15% Rib & Rump, 20% NMI\$.**

Purchaser:

\$:

6 KENMERE REDBACK R132E (P/S) (R/F)

Tattoo: MCS R132E Born: 05/06/2020

LT SILVER DISTANCE 5342 (OAU A7559E) (P)

LT LONG DISTANCE 9001 (OAU E143E) (P)

LT BELLE 7026 (OAU C9133E) (P)

SIRE: KENMERE MAXIMUS (MCS M19E) (P)

KENMERE GRAND MASTER (MCS G6E) (P)

KENMERE NICOLA J46E (MCS J46E) (P)

KENMERE NICOLA F73E (MCS F73E) (P)

LT BLUEGRASS 4017P (OAU Z4017E) (P)

KENMERE CHOCK E12E (MCS E12E) (P)

KENMERE KRISTINA III FL87 (MCS M18E)

DAM: KENMERE WILMUR L77E (MCS L77E)

SUEDOIS (OAF W5811F)

NARGOON WILMUR H007F (J5Y H7F)

NARGOON WILMUR 1 (J5Y B43F)

	CE DIR	CE DTR	GL	BW	200	400	600	MCW	MILK	SS
EBV	+14.3	+0.0	-4.1	-1.5	+15	+23	+38	+43	+11	+0.6
Acc	51%	42%	55%	74%	67%	69%	72%	65%	48%	76%

	CW	EMA	RIB	RUMP	RBV	IMF
EBV	+22	+0.8	+0.3	+0.1	-0.7	+0.3
Acc	61%	53%	59%	58%	56%	53%

\$ Index Values	
DTI (\$)	NMI (\$)
+\$30	+\$37

Comments: Redback is an impressive mobile red factor carcass bull with thickness through the length of his body and a super topline and even fats, top end ema, imf and bodyweight at the top end of the draft. **EBV Percentiles: Top 15% BW, 15% Milk.**

Purchaser:

\$:

7 KENMERE RANDOLPH R35E (P)

Tattoo: MCS R35E Born: 07/05/2020

LT SILVER DISTANCE 5342 (OAU A7559E) (P)

LT LONG DISTANCE 9001 (OAU E143E) (P)

LT BELLE 7026 (OAU C9133E) (P)

SIRE: KENMERE MAXIMUS (MCS M19E) (P)

KENMERE GRAND MASTER (MCS G6E) (P)

KENMERE NICOLA J46E (MCS J46E) (P)

KENMERE NICOLA F73E (MCS F73E) (P)

LT WESTERN SPUR 2061 PLD (OAU X2061E) (P)

KENMERE GILMAN KRISTO D17E E (MCS D17E)

KENMERE KRISTINA III FL87 (MCS M18E)

DAM: KENMERE MAKAYLA (MCS M24E)

NARGOON FIRE (J5Y F5E)

NARGOON QUE SERENA H25E (J5Y H25E) (P)

NARGOON QUE SERENA F2E (J5Y F2E)

	CE DIR	CE DTR	GL	BW	200	400	600	MCW	MILK	SS
EBV	+21.6	+11.4	-5.3	-5.6	+0	+6	-1	-34	+8	+0.2
Acc	48%	38%	54%	74%	67%	69%	72%	64%	47%	75%

	CW	EMA	RIB	RUMP	RBV	IMF
EBV	+10	-0.3	+0.8	+1.1	-1.3	+0.4
Acc	60%	50%	54%	53%	52%	49%

\$ Index Values	
DTI (\$)	NMI (\$)
+\$17	+\$43

Comments: Randolph is a soft looking wedge shaped bull with a moderate frame and adequate muscle matched by scan data that justifies his position in today's sale line up. **EBV Percentiles: Top 1% CED, 5% CEDTR, 10% GL, 1% BW.**

Purchaser:

\$:

8 KENMERE ROSCOE R177E (AI) (ET) (P)

Tattoo: MCS R177E Born: 03/08/2020

2UP PEUGEOT (2UP P46E) (P)
 NANDILLYAN PEUGEOT (F U1E) (P)
 ROSEDALE WALLAH Q69 (MR Q69E) (P)

SIRE: KENMERE GARRISON (MCS G9E) (P)

ROSEDALE Y106E (MR Y106E) (P)
 KENMERE CALAMITY C56E (MCS C56E) (P)
 MINNIE-VALE PING A49E (SGS A49E) (P)

PALGROVE SUPADOOPA (PK S63E) (P)
 PLATINUM ULTRA (AJ1 U37E) (P)
 PLATINUM QUALITY 2ND (AJ1 S2E)

DAM: KARINA INVESTMENTS PRIMROSE 2 (GPK A4E) (P)

WCR PRIME CUT 764 PLD (OAC S764E) (P)
 KARINA INVESTMENTS PRIMROSE (GPK X2E)
 2UP LEMONADE (2UP L138D)

Comments: Roscoe has sought after pedigree and carries an even depth of fat cover throughout the body from head to tail and a defined muscle pattern down into the hindquarter. **EBV Percentiles: Top 20% GL, 20% Milk, 20% SS, 10% Rib & Rump, 15% IMF%.**

	CE DIR	CE DTR	GL	BW	200	400	600	MCW	MILK	SS
EBV	+5.4	-22.7	-4.2	-0.1	+15	+23	+34	+33	+10	+1.7
Acc	48%	47%	56%	69%	62%	63%	62%	59%	54%	70%

	CW	EMA	RIB	RUMP	RBY	IMF
EBV	+14	+1.4	+1.6	+2.2	-0.8	+0.6
Acc	54%	49%	52%	52%	51%	48%

\$ Index Values

DTI (\$)	NMI (\$)
+\$26	+\$19



Purchaser:

\$:

9 KENMERE RAMSEY R123E (AI) (P)

Tattoo: MCS R123E Born: 01/06/2020

GERRARD PREACHER 31U (OAC D9989E) (P)
 GERRARD PASTOR 35Z (OAC H7921E) (P)
 GERRARD ROXANNE 18P (PED -4620E)

SIRE: ELDER'S BLACKJACK 788B (OAC K788E) (P)

SVY AD INVINCIBLE P 748T (PED C748E) (P)
 SVY STARTSTRUCK 8X FC382684 (OAC F8E) (P)
 SVY STARSTUCK 559R (PED A559E) (P)

LT BLUEGRASS 4017P (OAU Z4017E) (P)
 KENMERE CHOCK E12E (MCS E12E) (P)
 KENMERE KRISTINA III FL87 (MCS M18E)

DAM: KENMERE KASSIE (MCS K108E) (P/S)

CS PLD JUNCTION 4J (OAC U8742E) (P)
 GOBONGO LUCY E86E (GO E86E)
 GOBONGO LUCY C42E (GO C42E)

Comments: A classy young outcross bull that has a lot to like including his depth and height and strong sire head. The dam is sired by Kenmere Chock E12E who has reknown carcase traits that bred 181 progeny in the Kenmere herd. If you are chasing softness and performance this young sire could be your bull. **EBV Percentiles: Top 5% 200D, 5%400D, 1% 600D, 20% Milk, 5% SS, 1% CWT, 20% EMA, 10% DTI\$, 5% NMI\$.**

	CE DIR	CE DTR	GL	BW	200	400	600	MCW	MILK	SS
EBV	-4.2	-4.3	-1.7	+0.7	+22	+40	+68	+67	+10	+2.5
Acc	47%	40%	72%	73%	66%	68%	71%	63%	45%	74%

	CW	EMA	RIB	RUMP	RBY	IMF
EBV	+37	+2.3	+1.0	+1.0	+0.0	+0.0
Acc	58%	49%	53%	52%	52%	48%

\$ Index Values

DTI (\$)	NMI (\$)
+\$36	+\$83



Purchaser:

\$:

10 KENMERE BLACKJACK R157E (AI) (ET) (P)

Tattoo: MCS R157E Born: 20/06/2020

GERRARD PREACHER 31U (OAC D9989E) (P)
 GERRARD PASTOR 35Z (OAC H7921E) (P)
 GERRARD ROXANNE 18P (PED -4620E)

SIRE: ELDER'S BLACKJACK 788B (OAC K788E) (P)

SVY AD INVINCIBLE P 748T (PED C748E) (P)
 SVY STARTSTRUCK 8X (OAC F8E) (P)
 SVY STARSTUCK 559R (PED A559E) (P)

LT ASSERTION 1277 (PED W1277F) (P)
 LT BLUEGRASS 4017P (OAU Z4017E) (P)
 LT PEARLS BREEZE 2236 (PED X2236F) (P)

DAM: KENMERE ELITE (MCS E101E) (P)

GREENWOOD XPLOSION (TSP X32E) (P)
 MINNIE-VALE SLIPPER B35E (SGS B35E) (P)
 MINNIE VALE SLIPPER (SGS S90E)

Comments: Another outcross sire who has a distinctive pedigree with the Dam's sire being LT Bluegrass 4017P. This bull will improve your herd with milk, fats, EMA and IMF and softness, assisted by Blackjacks impressive weight gains. There are many options ahead for this sire. **EBV Percentiles: Top 20% GL, 5% 200D, 10% 400D, 10% 600D, 5% SS, 15% CW, 1% Rib & Rump, 15% DTI\$, 5% NMI\$.**

	CE DIR	CE DTR	GL	BW	200	400	600	MCW	MILK	SS
EBV	-0.5	+3.2	-4.4	+0.1	+23	+38	+52	+60	+3	+2.3
Acc	48%	41%	62%	74%	66%	67%	70%	63%	48%	71%

	CW	EMA	RIB	RUMP	RBV	IMF
EBV	+28	+2.1	+3.0	+3.7	-1.3	+0.4
Acc	58%	48%	52%	52%	51%	47%

\$ Index Values

DTI (\$) NMI (\$)

+\$35 +\$83



Purchaser:

\$:

11 KENMERE RIVERINA R98E (P)

Tattoo: MCS R98E Born: 24/05/2020

LT BLUEGRASS 4017P (OAU Z4017E) (P)
 KENMERE CHOCK E12E (MCS E12E) (P)
 KENMERE KRISTINA III FL87 (MCS M18E)

SIRE: KENMERE CHOCK N20E (MCS N20E) (P)

GOBONGO BOY G196E (GO G196E) (P)
 KENMERE KIKO (MCS K19E) (P)
 KENMERE GRACE (MCS G73E)

LT RIO BRAVO 3181 P (OAU Y5507E) (P)
 PARINGA RIO BRAVO D213E (TOL D213E) (P)
 PARINGA CIGAR B064 (TOL B64E)

DAM: KENMERE KELSIE (MCS K9E) (P)

ASHWOOD PARK BACARDI (HAS B10E) (P)
 ASHWOOD PARK HONOLULU (HAS H49E) (P)
 ASHWOOD PARK DEAR SOPHIE (HAS D84E) (P)

Comments: Riverina is classy son of Kenmere Chock N20 who is a real powerhouse yet carries enough softness, thickness and muscle throughout to be admired. When you combine his calving ease and birthweight he could suit heifers or cows, a true performance bull. **EBV Percentiles: Top 20% GL, 20% 600D, 5% CWT, 5% Rib, 1% Rump,**

	CE DIR	CE DTR	GL	BW	200	400	600	MCW	MILK	SS
EBV	+5.8	-11.4	-4.5	-0.4	+15	+21	+44	+29	+9	+2.8
Acc	50%	42%	49%	74%	66%	69%	72%	64%	47%	74%

	CW	EMA	RIB	RUMP	RBV	IMF
EBV	+14	+0.7	+2.4	+3.5	-1.6	+0.4
Acc	61%	53%	59%	58%	56%	53%

\$ Index Values

DTI (\$) NMI (\$)

+\$21 +\$51



Purchaser:

\$:

12 KENMERE PINAY R121E (AI) (P)

Tattoo: MCS R121E Born: 31/05/2020

BLASON 4286100325 (PED X286F)

IMPAIR (OAF N189F)

OFFICINE (PED -945F)

SIRE: PINAY (OAF U4134F)

HOMERE (PED -7561F)

MARY (OAF R8596F)

JACINTHE (PED -4550F)

NANDILLYAN PEUGEOT (F U1E) (P)

KENMERE GRAND MASTER (MCS G6E) (P)

KENMERE CALAMITY C56E (MCS C56E) (P)

DAM: KENMERE BLISSFUL J44E (MCS J44E) (P)

LT EASY BLEND 5125 PLD (OAU A5113E) (P)

KENMERE BLISSFUL (MCS E18E) (P)

ROSEDALE BLISSFUL B178 (MR B178E) (P)

Purchaser:

\$:

	CE DIR	CE DTR	GL	BW	200	400	600	MCW	MILK	SS
EBV	-2.4	+3.7	-3.8	+0.7	+15	+30	+45	+46	+11	-0.7
Acc	58%	55%	73%	75%	69%	71%	74%	68%	61%	77%

	CW	EMA	RIB	RUMP	RBY	IMF
EBV	+30	+3.0	+0.6	+0.6	+0.2	+1.0
Acc	65%	59%	62%	62%	61%	59%

\$ Index Values

DTI (\$) NMI (\$)

+\$31 +\$26

Comments: Kenmere selected Pinay as a sire that is an early calving ease bull who adds weight to progeny and improves carcass quality You will admire the mobility and carcass quality and width of spine and red meat this bull exhibits. The dam Kenmere Blissful J44E is a productive cow that has bred six calves in six years. **EBV Percentiles: Top 20% 600D,15% Milk, 10% CWT, 5% EMA, 5% IMF%.**

13 KENMERE REMBRANDT R149E (AI) (ET) (P)

Tattoo: MCS R149E Born: 17/06/2020

LT ASSERTION 1277 (PED W1277F) (P)

LT BLUEGRASS 4017P (OAU Z4017E) (P)

LT PEARLS BREEZE 2236 (PED X2236F) (P)

SIRE: KENMERE CHOCK E12E (MCS E12E) (P)

MANDALONG CHOCK (RP C59E) (P/S)

KENMERE KRISTINA III FL87 (MCS M18E)

GILMANDYKE PARK KRISTINA 2ND (AGP N17F)

WCR SIR FAB MAC 809 (OAU -57E) (P)

WCR SIR FA MAC 2244 (OAU B2244E) (P)

WCR MISS CENTURY 920 TWN (OAU -58) (P)

DAM: QUICKSILVER BREE (1QS B7E) (P)

TRINITY FARM HERVE (BVH H9F)

TRINITY FARM NOLA (TF1 N4E)

TRINITY FARM LA LUNE (TF1 L3E)

Purchaser:

\$:

	CE DIR	CE DTR	GL	BW	200	400	600	MCW	MILK	SS
EBV	+12.3	+1.0	-3.4	-1.1	+9	+18	+24	+19	+10	+0.5
Acc	56%	56%	58%	75%	69%	70%	72%	68%	63%	74%

	CW	EMA	RIB	RUMP	RBY	IMF
EBV	+19	+1.5	-0.9	-1.2	+0.7	+0.0
Acc	63%	57%	61%	61%	59%	56%

\$ Index Values

DTI (\$) NMI (\$)

+\$27 +\$34

Comments: Rembrandt is a Kenmere Chock E12E son who is a moderate wedge shaped frame with power and depth throughout. The dam is an outcross WCR SIR FA MAC 2244 daughter. This bull is well worthy of your inspection. **EBV Percentiles: Top 5% CED, 20% BW, 20% Milk.**

14 KENMERE RANGER R53E

Tattoo: MCS R53E Born: 23/04/2020

PINAY (OAF U4134F)

KENMERE PINAY J57E (MCS J57E) (P)

KENMERE GOLDEN SPUR (MCS G3E) (P)

SIRE: KENMERE NUTRIENT (MCS N131E) (P)

SEDALIA BORN WINNER (DEG B15F)

NARGOON WILMUR H017F (J5Y H17F)

NARGOON WILMUR 1 (J5Y B43F)

LT BLUEGRASS 4017P (OAU Z4017E) (P)

KENMERE CHOCK E12E (MCS E12E) (P)

KENMERE KRISTINA III FL87 (MCS M18E)

DAM: KENMERE NEWAGE (MCS N171E) (P)

KENMERE DAKOTA SPUR D9E (MCS D9E)

KENMERE JOY (MCS J2E) (P)

KENMERE EBONY (MCS E11E) (P)

Purchaser:

\$:

	CE DIR	CE DTR	GL	BW	200	400	600	MCW	MILK	SS
EBV	+15.0	+6.9	-5.7	-3.5	+6	+11	+15	+10	+10	+0.9
Acc	47%	39%	45%	73%	65%	67%	71%	63%	45%	73%

	CW	EMA	RIB	RUMP	RBY	IMF
EBV	+18	+1.4	-0.3	-0.6	+0.2	+0.1
Acc	59%	50%	56%	55%	54%	50%

\$ Index Values

DTI (\$) NMI (\$)

+\$24 +\$36

Comments: Ranger is a compact package with a medium frame that has depth of even muscle throughout his body. The bull's dam, Kenmere New Age is a Kenmere Chock E12E daughter, we have confidence this bull will breed true to type. **EBV Percentiles: Top 5% CED, 10% CEDTR, 10% GL, 5% BW, 20% Milk.**

15 KENMERE RYDER R39E (P/S)

Tattoo: MCS R39E Born: 08/05/2020

LT SILVER DISTANCE 5342 (OAU A7559E) (P)
 LT LONG DISTANCE 9001 (OAU E143E) (P)
 LT BELLE 7026 (OAU C9133E) (P)

SIRE: KENMERE MAXIMUS (MCS M19E) (P)

KENMERE GRAND MASTER (MCS G6E) (P)
 KENMERE NICOLA J46E (MCS J46E) (P)
 KENMERE NICOLA F73E (MCS F73E) (P)

LT BLUEGRASS 4017P (OAU Z4017E) (P)
 KENMERE CHOCK E12E (MCS E12E) (P)
 KENMERE KRISTINA III FL87 (MCS M18E)

DAM: KENMERE MEISHA (MCS M88E) (P/S)

NARGOON FIRE (J5Y F5E)
 NARGOON HELL FIRE (J5Y H63E) (P)
 NARGOON BEC 5 E04E (J5Y E4E) (P)

	CE DIR	CE DTR	GL	BW	200	400	600	MCW	MILK	SS
EBV	+21.4	+7.5	-4.9	-5.2	+4	+11	+10	-8	+15	-0.1
Acc	50%	41%	56%	74%	68%	70%	72%	65%	48%	75%

	CW	EMA	RIB	RUMP	RBV	IMF
EBV	+11	-1.0	+1.9	+2.4	-2.8	+1.1
Acc	61%	52%	57%	56%	54%	51%

\$ Index Values

DTI (\$)	NMI (\$)
+\$17	+\$29

Comments: Ryder is a poll sire with depth, thickness and an impressive rump muscle pattern who will add weight to your calves. This bull's scan data indicates he is amongst the highest for weight/EMA and IMF results. **EBV Percentiles: Top 1% CED, 10% CEDTR, 15% GL, 1% BW, 5% Milk, 5% Rib, 10% Rump, 5% IMF%.**

Purchaser:

\$:



Lot 15 Kenmere Ryder R39E (P/S)



Lot 17 Kenmere Rule Breaker R28E (AI)(P)(TW)

16 KENMERE ROBERTO R46E (P) (R/F)

Tattoo: MCS R46E Born: 11/05/2020

LT SILVER DISTANCE 5342 (OAU A7559E) (P)
 LT LONG DISTANCE 9001 (OAU E143E) (P)
 LT BELLE 7026 (OAU C9133E) (P)

SIRE: KENMERE MAXIMUS (MCS M19E) (P)

KENMERE GRAND MASTER (MCS G6E) (P)
 KENMERE NICOLA J46E (MCS J46E) (P)
 KENMERE NICOLA F73E (MCS F73E) (P)

LT WYOMING WIND 4020 PLD (OAU P4020E) (P)
 PLATINUM WIND-FALL W75E (AJ1 W75E) (P)
 DOWNUNDER GERALDINE (1LP G1D)

DAM: KENMERE QUE SERA M10E (MCS M10E) (P/S)

EATONS LEADER 2233 P (OAU X2217E) (P)
 KENMERE QUE SERA E2E (MCS E2E) (P)
 KENMERE QUE SERA B6E (MCS B6E) (P)

	CE DIR	CE DTR	GL	BW	200	400	600	MCW	MILK	SS
EBV	+15.2	+10.4	-6.9	-3.4	+9	+9	+13	+6	+12	+0.2
Acc	51%	42%	60%	74%	67%	69%	72%	65%	48%	75%

	CW	EMA	RIB	RUMP	RBV	IMF
EBV	+7	-0.1	+0.9	+0.9	-1.4	+0.9
Acc	61%	53%	57%	56%	55%	52%

\$ Index Values

DTI (\$)	NMI (\$)
+\$17	+\$32

Comments: Roberto is an impressive red factor wedge shaped bull, so deep and soft in a moderate frame with a magic carcass. Ideal for producing early finishing progeny for the domestic market. Bull's IMF% is amongst the highest in the draft the maternal dam is from Kenmere Que Sera who are renowned for milk quality in the Kenmere herd **EBV Percentiles: Top 5% CED, 5% CEDTR, 5% GL, 5% BW, 10% Milk, 5% IMF%.**



Purchaser:

\$:

17 KENMERE RULE BREAKER R28E (AI) (P) (TW)

Tattoo: MCS R28E Born: 02/05/2020

LT SILVER DISTANCE 5342 (OAU A7559E) (P)
 LT LONG DISTANCE 9001 (OAU E143E) (P)
 LT BELLE 7026 (OAU C9133E) (P)

SIRE: KENMERE MAXIMUS (MCS M19E) (P)

KENMERE GRAND MASTER (MCS G6E) (P)
 KENMERE NICOLA J46E (MCS J46E) (P)
 KENMERE NICOLA F73E (MCS F73E) (P)

PALGROVE UPTURN (PK U353E)
 ADVANCE XR8 (ADV X50E)
 ADVANCE GINA R/F (ADV T3E)

DAM: GOBONGO TIRION E77E (GO E77E)

ANTHEA PARK PRESIDIO FM150 (APS P4E) (P)
 KENMERE TIRION (KNC T35E) (P)
 KENMERE QUEEN OF HEARTS FP98 (KNC Q17E)

	CE DIR	CE DTR	GL	BW	200	400	600	MCW	MILK	SS
EBV	+15.1	+8.7	-6.1	-2.2	+19	+35	+44	+50	+8	+0.8
Acc	51%	44%	57%	74%	67%	69%	71%	63%	52%	75%

	CW	EMA	RIB	RUMP	RBY	IMF
EBV	+26	-0.3	+0.0	-0.1	-1.0	+0.7
Acc	60%	52%	57%	56%	54%	51%

\$ Index Values	
DTI (\$)	NMI (\$)
+\$41	+\$59

Comments: Rule Breaker R28E is a great combination with Kenmere Maximus our calving ease bull and Gobongo Tirion E77E who is a super fertile cow who has bred eleven progeny in nine years and holds top value for the mature cow weight in the breed. Rule Breaker has an impressive set of EBV's including calving ease, growth, imf and mature weight. **EBV Percentiles: Top 5% CED, 5% CEDTR, 5% GL, 10% BW, 10% 200D, 15% 400D, 20% 600D, 20% CWT, 10% IMF%, 5% DTI\$, 15% NMI\$.**

Purchaser: _____

\$: _____

18 KENMERE RINGO R96E (AI) (P) (TW)

Tattoo: MCS R96E Born: 22/05/2020

GERRARD PREACHER 31U (OAC D9989E) (P)
 GERRARD PASTOR 35Z (OAC H7921E) (P)
 GERRARD ROXANNE 18P (PED -4620E)

SIRE: ELDER'S BLACKJACK 788B (OAC K788E) (P)

SVY AD INVINCIBLE P 748T (PED C748E) (P)
 SVY STARTSTRUCK 8X FC382684 (OAC F8E) (P)
 SVY STARSTUCK 559R (PED A559E) (P)

LT EASY BLEND 5125 PLD (OAU A5113E) (P)
 KENMERE RADIATOR E90E (MCS E90E) (P)
 MINNIE-VALE RADIANCE B34E (SGS B34E) (P)

DAM: KENMERE BLISSFUL H82E (MCS H82E) (P)

MINNIE-VALE DEPUTY (SGS V78E) (P)
 ROSEDALE BLISSFUL Z210 (MR Z210E) (P)
 ROSEDALE BLISSFUL X91 (MR X91E) (P)

	CE DIR	CE DTR	GL	BW	200	400	600	MCW	MILK	SS
EBV	-3.3	+11.4	-3.1	-0.8	+12	+29	+53	+49	+11	+0.5
Acc	48%	40%	58%	74%	66%	68%	71%	63%	49%	73%

	CW	EMA	RIB	RUMP	RBY	IMF
EBV	+30	+1.4	+2.9	+3.3	-1.5	+0.2
Acc	58%	49%	53%	52%	52%	48%

\$ Index Values	
DTI (\$)	NMI (\$)
+\$23	+\$70

Comments: Ringo is bred by an outcross sire that is an easy doing poll bull with a moderate frame and a smooth muscle pattern. Scan data indicates Ringo has one of the highest weight to EMA ratios in the draft well worthy of an inspection. **EBV Percentiles: Top 5% CEDTR, 10% 600D, 15% Milk, 10% CWT, 1% Rib, 5% Rump, 1% NMI\$.**

Purchaser: _____

\$: _____

19 KENMERE RUSTIC R131E (P) (R/F)

Tattoo: MCS R131E Born: 05/06/2020

LT SILVER DISTANCE 5342 (OAU A7559E) (P)
 LT LONG DISTANCE 9001 (OAU E143E) (P)
 LT BELLE 7026 (OAU C9133E) (P)

SIRE: KENMERE MAXIMUS (MCS M19E) (P)

KENMERE GRAND MASTER (MCS G6E) (P)
 KENMERE NICOLA J46E (MCS J46E) (P)
 KENMERE NICOLA F73E (MCS F73E) (P)

LT BLUEGRASS 4017P (OAU Z4017E) (P)
 KENMERE CHOCK E12E (MCS E12E) (P)
 KENMERE KRISTINA III FL87 (MCS M18E)

DAM: KENMERE TINKERBELLE L33E (MCS L33E) (P)

LT EASY BLEND 5125 PLD (OAU A5113E) (P)
 KENMERE TINKERBELLE E53E (MCS E53E) (P)
 KENMERE TINKERBELLE (KNC T60E)

	CE DIR	CE DTR	GL	BW	200	400	600	MCW	MILK	SS
EBV	+21.3	+5.9	-5.1	-4.6	+5	+10	+0	-2	+9	-0.6
Acc	51%	42%	56%	75%	68%	70%	73%	65%	49%	76%

	CW	EMA	RIB	RUMP	RBY	IMF
EBV	+8	-1.1	+0.7	+0.9	-2.0	+0.4
Acc	61%	53%	58%	57%	55%	52%

\$ Index Values	
DTI (\$)	NMI (\$)
+\$16	+\$12

Comments: Rustic is a red factor Kenmere Maximus son who has bred 181 progeny in the Kenmere herd. They are born easily and develop extremely well and catch up in weight prior to weaning. Rustic's dam Tinkerbelle is Kenmere Chock E12E who is a trait leader for milk and low birth weight Rustic would suit a breeder looking to produce easy finishing high end domestic progeny. **EBV Percentiles: Top 1% CED, 15% CEDTR, 10% GL, 1% BW.**

Purchaser: _____

\$: _____

20 KENMERE RIO BRAVO R174E (AI) (ET)

Tattoo: MCS R174E Born: 31/07/2020

WCR PRIME CUT 764 PLD (OAC S764E) (P)
 LT RIO BLANCO 1234 P (OAU W591E) (P)
 LT PRAIRIE MAID 4054 (PED -4694E)

SIRE: LT RIO BRAVO 3181 P (OAU Y5507E) (P)

WCR SIR DUKE 611 (PED -611E)
 LT 7N OF DUKE 9083 PLD (OAU U2553E) (P)
 LT UNLIMITED PRO 1128 (PED -2370E) (P)

WCR SIR FAB MAC 809 (OAU -57E) (P)
 WCR SIR FA MAC 2244 (OAU B2244E) (P)
 WCR MISS CENTURY 920 TWN (OAU -58) (P)

DAM: THW ANGEL (THW G7E) (P)

FERNVALE XRATED (FEN X40E)
 FERNVALE ANGEL (FEN A30E)
 FERNVALE PRIMADONNA (FEN P28E)

Purchaser:

\$:

	CE DIR	CE DTR	GL	BW	200	400	600	MCW	MILK	SS
EBV	+4.9	-6.2	-4.6	-0.8	+12	+33	+51	+37	+15	+1.3
Acc	56%	54%	60%	73%	65%	66%	65%	63%	58%	70%

	CW	EMA	RIB	RUMP	RBY	IMF
EBV	+27	+1.9	+0.5	+1.8	-0.7	+1.5
Acc	59%	56%	57%	57%	57%	55%

\$ Index Values

DTI (\$) NMI (\$)

+\$39 +\$60

Comments: Kenmere Rio Bravo is an outcross ET bull calf whose sire Rio Bravo is a trait leader for birthweight, 200, 400, 600, milk and scrotal size with over 300 progeny. Kenmere Rio Bravo has stood out as a young calf and has grown into a sire who will suit many breeding programs. **EBV Percentiles: Top 15% GL, 20% 400D, 10% 600D, 5% Milk, 15% CWT, 15% Rump, 1% IMF%, 10% DTI\$, 15% NMI\$.**

21 KENMERE ROBINSON R49E (P)

Tattoo: MCS R49E Born: 14/05/2020

LT SILVER DISTANCE 5342 (OAU A7559E) (P)
 LT LONG DISTANCE 9001 (OAU E143E) (P)
 LT BELLE 7026 (OAU C9133E) (P)

SIRE: KENMERE MAXIMUS (MCS M19E) (P)

KENMERE GRAND MASTER (MCS G6E) (P)
 KENMERE NICOLA J46E (MCS J46E) (P)
 KENMERE NICOLA F73E (MCS F73E) (P)

KENMERE DAKOTA SPUR D9E (MCS D9E)
 KENMERE HOUDINI (MCS H95E)
 KENMERE QUE SERA B6E (MCS B6E) (P)

DAM: KENMERE KRISTINA L63E (MCS L63E) (P)

LT BLUEGRASS 4017P (OAU Z4017E) (P)
 KENMERE KRISTINA E19E (MCS E19E) (P)
 KENMERE KRISTINA III FL87 (MCS M18E)

Purchaser:

\$:

	CE DIR	CE DTR	GL	BW	200	400	600	MCW	MILK	SS
EBV	+15.9	+4.8	-4.8	-2.7	+4	+4	-1	-4	+8	+0.1
Acc	49%	40%	55%	74%	68%	70%	73%	65%	48%	76%

	CW	EMA	RIB	RUMP	RBY	IMF
EBV	+3	-0.2	+1.1	+1.5	-1.5	+0.5
Acc	61%	52%	56%	55%	54%	51%

\$ Index Values

DTI (\$) NMI (\$)

+\$10 +\$13

Comments: Robinson is a moderate poll bull with wedge shape and fine skin type. The dam is a descendant of Kenmere Kristina who was the first live purebred Charolais imported from New Zealand by Kenmere in 1975. This bull is worthy of your inspection. **EBV Percentiles: Top 5% CED, 20% CEDTR, 15% GL, 10% BW, 20% Rib & Rump, 20% IMF%.**

**HOMOZYGOUS
POLL - DNA**

22 KENMERE ROLLER COASTER R110E (TW)

Tattoo: MCS R110E Born: 27/05/2020

LT BLUEGRASS 4017P (OAU Z4017E) (P)
 KENMERE CHOCK E12E (MCS E12E) (P)
 KENMERE KRISTINA III FL87 (MCS M18E)

SIRE: KENMERE CHOCK N20E (MCS N20E) (P)

GOBONGO BOY G196E (GO G196E) (P)
 KENMERE KIKO (MCS K19E) (P)
 KENMERE GRACE (MCS G73E)

LT WESTERN SPUR 2061 PLD (OAU X2061E) (P)
 KENMERE DAKOTA SPUR D9E (MCS D9E)
 KARINA INVESTMENTS WINDY WENDY (GPK A15E) (P)

DAM: KENMERE JOESY (MCS J3E) (P)

LT EASY BLEND 5125 PLD (OAU A5113E) (P)
 KENMERE EBONY (MCS E11E) (P)
 CALOONA PARK A0070 (LSF A70E) (P/S)

Purchaser:

\$:

	CE DIR	CE DTR	GL	BW	200	400	600	MCW	MILK	SS
EBV	+1.1	-1.7	-4.5	-0.1	+17	+26	+42	+42	+8	+2.1
Acc	50%	42%	48%	74%	67%	69%	72%	65%	49%	74%

	CW	EMA	RIB	RUMP	RBY	IMF
EBV	+23	+0.7	+1.7	+2.0	-1.2	-0.1
Acc	60%	51%	56%	55%	54%	51%

\$ Index Values

DTI (\$) NMI (\$)

+\$22 +\$44

Comments: Kenmere Roller Coaster is very quiet and growthy son of Kenmere Chock N20E who has plenty of deep soft muscling and standing on strong bone he is ready for serious work. **EBV Percentiles: Top 20% GL, 20% 200D, 10% SS, 10% Rib & Rump.**

23 KENMERE RENATO R86E (P) (TW)

Tattoo: MCS R86E Born: 17/05/2020

LT BLUEGRASS 4017P (OAU Z4017E) (P)
KENMERE CHOCK E12E (MCS E12E) (P)
KENMERE KRISTINA III FL87 (MCS M18E)

SIRE: KENMERE CHOCK N20E (MCS N20E) (P)

GOBONGO BOY G196E (GO G196E) (P)
KENMERE KIKO (MCS K19E) (P)
KENMERE GRACE (MCS G73E)

NANDILLYAN PEUGEOT (F U1E) (P)
KENMERE GRAND MASTER (MCS G6E) (P)
KENMERE CALAMITY C56E (MCS C56E) (P)

DAM: KENMERE TINKERBELLE L15E (MCS L15E) (P)

KENMERE EXPRESS 104E (MCS E104E) (P)
KENMERE TINKERBELLE H75E (MCS H75E) (P)
KENMERE TINKERBELLE E42E (MCS E42E) (P)

	CE DIR	CE DTR	GL	BW	200	400	600	MCW	MILK	SS
EBV	+1.2	-5.4	-2.5	-0.9	+11	+11	+27	+23	+11	+1.1
Acc	49%	40%	52%	73%	66%	68%	71%	63%	47%	74%

	CW	EMA	RIB	RUMP	RBY	IMF
EBV	+10	+0.9	+3.1	+4.0	-2.2	+0.8
Acc	60%	50%	54%	53%	53%	49%

\$ Index Values

DTI (\$) NMI (\$)

+\$9 +\$27

Comments: Renato is a Kenmere Chock N20E son who is not dissimilar to the previous lot who moves freely and has a deep square muscle across the rump and softness through the body. **EBV Percentiles: Top 15% Milk, 1% Rib & Rump, 10% IMF%.**

Purchaser:

\$:



24 KENMERE RHESUS R171E (AI) (ET) (R/F)

Tattoo: MCS R171E Born: 26/07/2020

ZUP PEUGEOT (ZUP P46E) (P)
NANDILLYAN PEUGEOT (F U1E) (P)
ROSEDALE WALLAH Q69 (MR Q69E) (P)

SIRE: KENMERE GARRISON (MCS G9E) (P)

ROSEDALE Y106E (MR Y106E) (P)
KENMERE CALAMITY C56E (MCS C56E) (P)
MINNIE-VALE PING A49E (SGS A49E) (P)

PALGROVE SUPADOOPA (PK S63E) (P)
PLATINUM ULTRA (AJ1 U37E) (P)
PLATINUM QUALITY 2ND (AJ1 S2E)

DAM: KARINA INVESTMENTS PRIMROSE 2 (GPK A4E) (P)

WCR PRIME CUT 764 PLD (OAC S764E) (P)
KARINA INVESTMENTS PRIMROSE (GPK X2E)
ZUP LEMONADE (ZUP L138D)

	CE DIR	CE DTR	GL	BW	200	400	600	MCW	MILK	SS
EBV	+7.9	-21.7	-4.3	-0.7	+10	+18	+27	+22	+11	+1.6
Acc	48%	47%	54%	60%	62%	59%	60%	57%	54%	57%

	CW	EMA	RIB	RUMP	RBY	IMF
EBV	+11	+1.0	+1.3	+1.8	-0.8	+0.6
Acc	51%	42%	48%	47%	45%	42%

\$ Index Values

DTI (\$) NMI (\$)

+\$23 +\$14

Comments: A long powerful bull with a strong top line that is really wide from behind. A smooth muscle expression extends the full length of the carcass. Tidy sheath and scrotal. Worthy of an inspection. **EBV Percentiles: Top 15% CED, 20% GL, 15% Milk, 15% Rib & Rump, 15% IMF%.**

Purchaser:

\$:

25 KENMERE ROBERTINO R248E (P)

Tattoo: MCS R248E Born: 10/09/2020

LT WESTERN SPUR 2061 PLD (OAU X2061E) (P)
 KENMERE GILMAN KRISTO D17E E (MCS D17E)
 KENMERE KRISTINA III FL87 (MCS M18E)

SIRE: KENMERE KRISTO'S BOY (MCS N53E) (P)

KENMERE GRAND MASTER (MCS G6E) (P)
 KENMERE BLISSFUL J44E (MCS J44E) (P)
 KENMERE BLISSFUL (MCS E18E) (P)

PCC SUDDEN IMPACT 848U (OAC D1017E) (P)
 ROSEDALE KOOLY (MR K16E) (P)
 ROSEDALE GOLDEN GIRL A34 (MR A34E) (P)

DAM: KENMERE NADINE (MCS N25E) (P)

KENMERE CHOCK E12E (MCS E12E) (P)
 KENMERE KELSIE K25E (MCS K25E) (P)
 KARINA INVESTMENTS WINDY WENDY (GPK A15E) (P)

	CE DIR	CE DTR	GL	BW	200	400	600	MCW	MILK	SS
EBV	+16.3	+0.7	-3.6	-1.9	+9	+21	+17	+8	+10	+0.4
Acc	45%	35%	43%	72%	64%	66%	64%	61%	41%	74%

	CW	EMA	RIB	RUMP	RBY	IMF
EBV	+15	-0.2	+0.8	+0.7	-1.1	+0.0
Acc	55%	50%	55%	54%	53%	49%

\$ Index Values

DTI (\$) NMI (\$)

+\$25 +\$29

Comments: Robertino is a wedge shaped with a sires head and even cover through the depth of his body. Bull has one of the highest weight to EMA ratios. **EBV Percentiles: Top 5% CED, 10% BW, 20% Milk.**

Purchaser:

\$:

26 KENMERE REDEMPTION R170E (P)

Tattoo: MCS R170E Born: 02/07/2020

LT BLUEGRASS 4017P (OAU Z4017E) (P)
 KENMERE CHOCK E12E (MCS E12E) (P)
 KENMERE KRISTINA III FL87 (MCS M18E)

SIRE: KENMERE CHOCK N20E (MCS N20E) (P)

GOBONGO BOY G196E (GO G196E) (P)
 KENMERE KIKO (MCS K19E) (P)
 KENMERE GRACE (MCS G73E)

2UP PEUGEOT (2UP P46E) (P)
 NANDILLYAN PEUGEOT (F U1E) (P)
 ROSEDALE WALLAH Q69 (MR Q69E) (P)

DAM: KENMERE CALAMITY L21E (MCS L21E) (P)

ROSEDALE Y106E (MR Y106E) (P)
 KENMERE CALAMITY C56E (MCS C56E) (P)
 MINNIE-VALE PING A49E (SGS A49E) (P)

	CE DIR	CE DTR	GL	BW	200	400	600	MCW	MILK	SS
EBV	+4.0	-3.3	-2.9	-0.9	+9	+10	+21	+19	+12	+1.6
Acc	49%	41%	46%	67%	57%	58%	59%	57%	46%	53%

	CW	EMA	RIB	RUMP	RBY	IMF
EBV	+9	+0.9	+2.9	+3.8	-1.9	+0.5
Acc	50%	41%	47%	47%	44%	41%

\$ Index Values

DTI (\$) NMI (\$)

+\$9 +\$26

Comments: Redemption is a soft shaped growthy bull that should suit early finishing markets. **EBV Percentiles: Top 10% Milk, 1% Rib & Rump, 20% IMF%.**

Purchaser:

\$:

27 KENMERE RUEBEN R181E (P) (TW)

Tattoo: MCS R181E Born: 09/08/2020

LT SILVER DISTANCE 5342 (OAU A7559E) (P)
 LT LONG DISTANCE 9001 (OAU E143E) (P)
 LT BELLE 7026 (OAU C9133E) (P)

SIRE: KENMERE MAXIMUS (MCS M19E) (P)

KENMERE GRAND MASTER (MCS G6E) (P)
 KENMERE NICOLA J46E (MCS J46E) (P)
 KENMERE NICOLA F73E (MCS F73E) (P)

LT BLUEGRASS 4017P (OAU Z4017E) (P)
 KENMERE CHOCK E12E (MCS E12E) (P)
 KENMERE KRISTINA III FL87 (MCS M18E)

DAM: KENMERE QUE SERA L87E (MCS L87E)

KENMERE DAKOTA SPUR D9E (MCS D9E)
 KENMERE QUE SERA G16E (MCS G16E) (P)
 KENMERE QUE SERA (KNC Q18E) (P)

	CE DIR	CE DTR	GL	BW	200	400	600	MCW	MILK	SS
EBV	+20.2	+9.0	-5.6	-4.2	+9	+15	+17	+3	+9	+0.7
Acc	51%	42%	56%	71%	66%	67%	66%	62%	49%	73%

	CW	EMA	RIB	RUMP	RBY	IMF
EBV	+17	+0.6	+1.7	+2.1	-1.6	+0.4
Acc	58%	52%	58%	57%	55%	52%

\$ Index Values

DTI (\$) NMI (\$)

+\$23 +\$48

Comments: Reuben is soft skinned bull with a tidy sheath and srotal, great temperment and doing ability who is a Maximus son with the dam's sire a Kenmere Chock daughter could suit crossbreeding with British cows. **EBV Percentiles: Top 1% CED, 5% CEDTR, 10% GL, 5% BW, 10% Rib & Rump. (Photograph with Lot 29)**

Purchaser:

\$:

28

KENMERE RINGLEADER R101E (P)

HOMOZYGOUS
POLL - DNA

Tattoo: MCS R101E Born: 24/05/2020

LT SILVER DISTANCE 5342 (OAU A7559E) (P)
 LT LONG DISTANCE 9001 (OAU E143E) (P)
 LT BELLE 7026 (OAU C9133E) (P)

SIRE: KENMERE MAXIMUS (MCS M19E) (P)

KENMERE GRAND MASTER (MCS G6E) (P)
 KENMERE NICOLA J46E (MCS J46E) (P)
 KENMERE NICOLA F73E (MCS F73E) (P)

KENMERE CHOCK E12E (MCS E12E) (P)
 KENMERE GANGSTER (MCS G54E) (P)
 KENMERE DEJAVU D93E (MCS D93E) (P)

DAM: KENMERE PING K80E (MCS K80E) (P)

KENMERE DAKOTA SPUR D9E (MCS D9E)
 KENMERE PING (MCS H61E) (P)
 KENMERE PING E20E (MCS E20E) (P)

Comments: Ringleader is a soft compact bull who carries the meat quality traits that will suit breeders where meat quality from progeny is important on sale day. **EBV Percentiles: Top 1% CED, 1% CEDTR, 5% GL, 1% BW, 15% Milk, 1% Rib, 5% Rump.**

	CE DIR	CE DTR	GL	BW	200	400	600	MCW	MILK	SS
EBV	+22.3	+12.4	-6.9	-7.7	-5	-19	-30	-58	+11	-0.4
Acc	49%	39%	54%	74%	67%	69%	70%	64%	48%	70%

	CW	EMA	RIB	RUMP	RBY	IMF
EBV	-8	-0.1	+2.6	+3.4	-2.3	+0.4
Acc	60%	50%	56%	56%	53%	49%

\$ Index Values

DTI (\$) NMI (\$)

-\$6 +\$9

Purchaser:

\$:

29

KENMERE RADIUS R69E (P)

HOMOZYGOUS
POLL - DNA

Tattoo: MCS R69E Born: 10/05/2020

LT WESTERN SPUR 2061 PLD (OAU X2061E) (P)
 KENMERE GILMAN KRISTO D17E E (MCS D17E)
 KENMERE KRISTINA III FL87 (MCS M18E)

SIRE: KENMERE KRISTO'S BOY (MCS N53E) (P)

KENMERE GRAND MASTER (MCS G6E) (P)
 KENMERE BLISSFUL J44E (MCS J44E) (P)
 KENMERE BLISSFUL (MCS E18E) (P)

LT BLUEGRASS 4017P (OAU Z4017E) (P)
 KENMERE GRENADE (MCS G8E) (P)
 MINNIE-VALE PING A49E (SGS A49E) (P)

DAM: KENMERE NAVARRO N128E (MCS N128E) (P)

ROSEDALE Y106E (MR Y106E) (P)
 KENMERE NAVARRO B14E (MCS B14E)
 KENMERE NAVARRO (MCS N35D)

Comments: Kenmere Radius could be well suited to cross breeding with Angus cows. EBV's indicate he is in top 1% for Rib and Rump fats. **EBV Percentiles: Top 1% CED, 10% CEDTR, 20% GL, 1% BW, 1% Rib & Rump. 5% IMF%.**

	CE DIR	CE DTR	GL	BW	200	400	600	MCW	MILK	SS
EBV	+20.5	+6.8	-4.2	-4.9	-1	-8	-19	-36	+7	+1.1
Acc	44%	35%	42%	72%	64%	66%	68%	62%	43%	67%

	CW	EMA	RIB	RUMP	RBY	IMF
EBV	-7	-0.1	+2.9	+4.0	-2.6	+1.1
Acc	57%	46%	52%	51%	50%	45%

\$ Index Values

DTI (\$) NMI (\$)

+\$1 +\$21



Purchaser:

\$:

30 KENMERE ROCCO R129E (P)

Tattoo: MCS R129E Born: 04/06/2020

PINAY 8552394134 (OAF U4134F)
 KENMERE PINAY J57E (MCS J57E) (P)
 KENMERE GOLDEN SPUR (MCS G3E) (P)

SIRE: KENMERE NUTRIENT (MCS N131E) (P)

SEDALIA BORN WINNER (DEG B15F)
 NARGOON WILMUR H017F (J5Y H17F)
 NARGOON WILMUR 1 (J5Y B43F)

PLATINUM WIND-FALL W75E (AJ1 W75E) (P)
 KENMERE SIR LAWRENCE (MCS L12E) (P)
 ROSEDALE BLISSFUL Z210 (MR Z210E) (P)

DAM: KENMERE EMILY N37E (MCS N37E) (P)

KENMERE DAKOTA SPUR D9E (MCS D9E)
 KENMERE EMILY J32E (MCS J32E) (P)
 KENMERE EMILY (MCS E120E) (P)

Comments: Rocco is a quality young bull with balance and an impressive topline with soft skin and adequate power and muscle. This sire's scan data indicates he is at the top end for EMA and one of the heaviest bulls in the sale. The bull's grand sire is in the top 5 per cent for birthweight. **EBV Percentiles: Top 20% CWT, 10% EMA, 15% RBY%.**

	CE DIR	CE DTR	GL	BW	200	400	600	MCW	MILK	SS
EBV	-0.6	-0.7	-3.9	-0.8	+10	+23	+37	+24	+8	+0.6
Acc	46%	37%	41%	62%	64%	66%	70%	62%	42%	73%

	CW	EMA	RIB	RUMP	RBY	IMF
EBV	+26	+2.7	+0.1	+0.3	+0.9	+0.1
Acc	58%	49%	55%	55%	54%	49%

\$ Index Values

DTI (\$)	NMI (\$)
+\$28	+\$52



Purchaser:

\$:

31 KENMERE RENSHAW R64E (P)

Tattoo: MCS R64E Born: 06/05/2020

LT WESTERN SPUR 2061 PLD (OAU X2061E) (P)
 KENMERE GILMAN KRISTO D17E E (MCS D17E)
 KENMERE KRISTINA III FL87 (MCS M18E)

SIRE: KENMERE KRISTO'S BOY (MCS N53E) (P)

KENMERE GRAND MASTER (MCS G6E) (P)
 KENMERE BLISSFUL J44E (MCS J44E) (P)
 KENMERE BLISSFUL (MCS E18E) (P)

TEMANA GOLDEN LOGIE G66E (TJ G66E) (P)
 DSK TGL KAKADU K69E (DSK K69E) (P)
 DSK MY BEATRIX C69E (DSK C69E) (P)

DAM: KENMERE TANT MIEUX N177E (MCS N177E) (P)

LT BLUEGRASS 4017P (OAU Z4017E) (P)
 KENMERE TANT MIEUX G19E (MCS G19E) (P)
 KENMERE TANT MIEUX (KNC T42E)

Comments: Renshaw is a Kristo Boy son who impressed us as a very moderate soft poll bull with positive fat and IMF that may suit heifer duties. **EBV Percentiles: Top 1% CED, 15% CEDTR, 5% BW, 15% Rib & Rump, 20% IMF%.**

	CE DIR	CE DTR	GL	BW	200	400	600	MCW	MILK	SS
EBV	+20.4	+5.8	-3.9	-3.6	+3	-1	-14	-18	+4	+0.6
Acc	46%	37%	43%	72%	64%	67%	70%	63%	43%	53%

	CW	EMA	RIB	RUMP	RBY	IMF
EBV	-3	-0.3	+1.3	+1.9	-1.6	+0.6
Acc	58%	40%	48%	48%	44%	40%

\$ Index Values

DTI (\$)	NMI (\$)
+\$8	+\$12



Grand sire: Kenmere Gilman Kristo D17E

Purchaser:

\$:

32 KENMERE REMY R79E (P)

Tattoo: MCS R79E Born: 25/05/2020

LT WESTERN SPUR 2061 PLD (OAU X2061E) (P)
KENMERE GILMAN KRISTO D17E E (MCS D17E)
KENMERE KRISTINA III FL87 (MCS M18E)

SIRE: KENMERE KRISTO'S BOY (MCS N53E) (P)

KENMERE GRAND MASTER (MCS G6E) (P)
KENMERE BLISSFUL J44E (MCS J44E) (P)
KENMERE BLISSFUL (MCS E18E) (P)

KENMERE RADIATOR E90E (MCS E90E) (P)
KENMERE HERICHIO (MCS H103E) (P)
KENMERE DIAMOND SPUR D8E (MCS D8E) (P)

DAM: KENMERE QUE SERA N101E (MCS N101E) (P)

LT BLUEGRASS 4017P (OAU Z4017E) (P)
KENMERE QUE SERA E119E (MCS E119E) (P)
KENMERE QUE SERA B6E (MCS B6E) (P)

Comments: Remy is a super quiet bull from the great Que Sera cow line. This sire has extra extension from his wedge shape front end and an impressive topline and thickness throughout his body. EBV's indicate he is in the top 10% of the breed for Rib and Rump fat. **EBV Percentiles: Top 1% CED, 1% CEDTR, 10% GL, 5% BW, 10% Rib & Rump.**

	CE DIR	CE DTR	GL	BW	200	400	600	MCW	MILK	SS
EBV	+18.9	+11.8	-5.2	-3.7	+10	+13	+8	+0	+6	+1.3
Acc	46%	37%	45%	73%	66%	68%	71%	64%	45%	74%

	CW	EMA	RIB	RUMP	RBV	IMF
EBV	+11	+0.5	+1.6	+2.1	-1.1	+0.1
Acc	59%	50%	56%	55%	54%	50%

\$ Index Values

DTI (\$)	NMI (\$)
+\$23	+\$53



Purchaser:

\$:

33 KENMERE ROYCE R70E (P)

Tattoo: MCS R70E Born: 10/05/2020

LT WESTERN SPUR 2061 PLD (OAU X2061E) (P)
KENMERE GILMAN KRISTO D17E E (MCS D17E)
KENMERE KRISTINA III FL87 (MCS M18E)

SIRE: KENMERE KRISTO'S BOY (MCS N53E) (P)

KENMERE GRAND MASTER (MCS G6E) (P)
KENMERE BLISSFUL J44E (MCS J44E) (P)
KENMERE BLISSFUL (MCS E18E) (P)

PINAY 8552394134 (OAF U4134F)
KENMERE PINAY J57E (MCS J57E) (P)
KENMERE GOLDEN SPUR (MCS G3E) (P)

DAM: KENMERE TINKERBELLE N94E (MCS N94E)

NANDILLYAN PEUGEOT (F U1E) (P)
KENMERE TINKERBELLE J41E (MCS J41E) (P)
KENMERE TINKERBELLE B5E (MCS B5E) (P)

Comments: Royce is a polled bull with even thickness along his smooth skinned body that catches your eye. Dam is from the Tinkerbelle cow family. **EBV Percentiles: Top 1% CED, 10% GL, 5% BW.**

	CE DIR	CE DTR	GL	BW	200	400	600	MCW	MILK	SS
EBV	+18.8	+4.4	-5.5	-4.0	+7	+11	-2	-7	+8	+0.8
Acc	47%	37%	45%	73%	65%	67%	71%	64%	42%	74%

	CW	EMA	RIB	RUMP	RBV	IMF
EBV	+8	+0.0	+0.1	+0.2	-0.7	+0.3
Acc	59%	50%	56%	55%	54%	50%

\$ Index Values

DTI (\$)	NMI (\$)
+\$21	+\$20



Purchaser:

\$:

34 KENMERE RAFER R200E (P)

Tattoo: MCS R200E Born: 19/08/2020

MERIT VINTAGE 4065P (OAC -414E) (P)
 CML DISTINCTION 318A (OAC J318E) (P)
 TARGET PLD GINNY 40P (OAC Z486E) (P)

SIRE: CHARNELLE DISTINCTION N42E (GKA N42E) (P)

CHARNELLE FEDERATION (GKA F29E) (P)
 CHARNELLE FESTOON 5 (GKA H58E) (P/S)
 PALGROVE FESTOON 55 (PK T91E)

IJOUFFLU (OAF N6327F)
 RAI (OAF V8611F)
 NOUMBA (PED -3210F)

DAM: NARGOON VAMPIRE H004F (J5Y H4F)

FERNVALE ZAMBO (FEN Z73F)
 NARGOON VAMPIRE 3 (J5Y C37F)
 NARGOON VAMPIRE (J5Y V37F)

Comments: Raffer is an outcross with a great sire's head that has an eye catching body that oozes softness with a deep smooth muscling pattern, tidy sheath and scrotal area. There is a lot to like about this young bull who is the youngest sire in the sale - mark your catalogue. **EBV Percentiles: Top 5% 200D, 5% 400D, 5% 600D, 10% SS, 5% CWT, 15% EMA, 5% RBV%, 5% DTI\$, 10% NMI\$.**

	CE DIR	CE DTR	GL	BW	200	400	600	MCW	MILK	SS
EBV	+5.8	-2.4	-2.2	+0.9	+21	+39	+58	+56	+4	+2.0
Acc	45%	34%	54%	71%	63%	64%	61%	58%	44%	73%

	CW	EMA	RIB	RUMP	RBV	IMF
EBV	+36	+2.5	-1.4	-2.1	+1.8	-0.5
Acc	52%	46%	49%	48%	48%	44%

\$ Index Values

DTI (\$)	NMI (\$)
+\$46	+\$70

Purchaser:

\$:

35 KENMERE REECE R125E (P)

Tattoo: MCS R125E Born: 02/06/2020

LT BLUEGRASS 4017P (OAU Z4017E) (P)
 KENMERE CHOCK E12E (MCS E12E) (P)
 KENMERE KRISTINA III FL87 (MCS M18E)

SIRE: KENMERE CHOCK N20E (MCS N20E) (P)

GOBONGO BOY G196E (GO G196E) (P)
 KENMERE KIKO (MCS K19E) (P)
 KENMERE GRACE (MCS G73E)

LT UNLIMITED EASE 9108 (OAU J9108E)
 LT EASY BLEND 5125 PLD (OAU A5113E) (P)
 LT BRENDA 1014 PLD (PED -4572E)

DAM: KENMERE FRANCESCA L78E (MCS L78E) (P)

KENMERE DAKOTA SPUR D9E (MCS D9E)
 KENMERE FRANCESCA (MCS F28E) (P)
 CALOONA PARK A0091 (LSF A91E) (P)

Comments: Reece is an early maturing bull with an impressive topline, length of body and deep muscling pattern with a big scrotal. Calving ease bull son of Kenmere Chock N20E. Reece's weight gain is ahead of his age group. **EBV Percentiles: Top 5% 200D, 15% 400D, 5% 600D, 10% SS, 10% CWT, 10% Rib & Rump.**

	CE DIR	CE DTR	GL	BW	200	400	600	MCW	MILK	SS
EBV	-5.2	-14.2	-2.7	+2.2	+21	+35	+58	+75	+5	+2.2
Acc	49%	42%	49%	74%	67%	69%	72%	65%	48%	75%

	CW	EMA	RIB	RUMP	RBV	IMF
EBV	+29	+1.0	+1.7	+2.0	-1.0	-0.4
Acc	61%	53%	58%	57%	56%	52%

\$ Index Values

DTI (\$)	NMI (\$)
+\$24	+\$36

HOMOZYGOUS
POLL - DNA

Purchaser:

\$:

36 KENMERE RUMON R74E

Tattoo: MCS R74E Born: 14/05/2020

LT WESTERN SPUR 2061 PLD (OAU X2061E) (P)
 KENMERE GILMAN KRISTO D17E E (MCS D17E)
 KENMERE KRISTINA III FL87 (MCS M18E)

SIRE: KENMERE KRISTO'S BOY (MCS N53E) (P)

KENMERE GRAND MASTER (MCS G6E) (P)
 KENMERE BLISSFUL J44E (MCS J44E) (P)
 KENMERE BLISSFUL (MCS E18E) (P)

PINAY (OAF U4134F)

KENMERE PINAY J57E (MCS J57E) (P)
 KENMERE GOLDEN SPUR (MCS G3E) (P)

DAM: KENMERE NAVARRO N125E (MCS N125E) (P)

KENMERE GANGSTER (MCS G54E) (P)
 KENMERE NAVARRO K77E (MCS K77E) (P)
 KENMERE NAVARRO H64E (MCS H64E) (P)

Comments: Rumon is smooth in his muscle pattern, moderate shape bull that stands out in the paddock with a deep scrotal. The Bull's dam is a productive female who has bred five calves in five years. **EBV Percentiles: Top 1% CED, 5% CEDTR, 20% GL, 5% BW.**

	CE DIR	CE DTR	GL	BW	200	400	600	MCW	MILK	SS
EBV	+18.6	+9.0	-4.2	-3.1	+2	-1	-16	-12	+6	-0.5
Acc	46%	36%	44%	73%	65%	68%	71%	64%	44%	74%

	CW	EMA	RIB	RUMP	RBY	IMF
EBV	+0	+0.4	+0.2	+0.5	-0.6	+0.3
Acc	59%	50%	56%	55%	54%	50%

\$ Index Values

DTI (\$)	NMI (\$)
+\$10	+\$1



Purchaser:

\$:

37 KENMERE REINER R75E

Tattoo: MCS R75E Born: 14/05/2020

LT WESTERN SPUR 2061 PLD (OAU X2061E) (P)
 KENMERE GILMAN KRISTO D17E E (MCS D17E)
 KENMERE KRISTINA III FL87 (MCS M18E)

SIRE: KENMERE KRISTO'S BOY (MCS N53E) (P)

KENMERE GRAND MASTER (MCS G6E) (P)
 KENMERE BLISSFUL J44E (MCS J44E) (P)
 KENMERE BLISSFUL (MCS E18E) (P)

PLATINUM WIND-FALL W75E (AJ1 W75E) (P)

KENMERE SIR LAWRENCE (MCS L12E) (P)
 ROSEDALE BLISSFUL Z210 (MR Z210E) (P)

DAM: KENMERE NAVARRO N13E (MCS N13E) (P)

GOBONGO BOY G196E (GO G196E) (P)
 KENMERE NAVARRO K73E (MCS K73E) (P)
 KENMERE NAVARRO F12E (MCS F12E)

Comments: Reiner has a wedge shape front and a smooth coat covering his moderate shaped body that carries adequate muscle and softness with a tidy sheath and deep scrotal. **EBV Percentiles: Top 5% CED, 20% GL, 5% BW, 20% Milk, 10% SS.**

	CE DIR	CE DTR	GL	BW	200	400	600	MCW	MILK	SS
EBV	+17.1	+2.7	-4.4	-3.0	+11	+16	+14	+3	+10	+2.2
Acc	46%	36%	44%	73%	65%	67%	71%	63%	43%	74%

	CW	EMA	RIB	RUMP	RBY	IMF
EBV	+12	+0.4	+0.6	+0.8	-0.5	+0.0
Acc	58%	50%	56%	55%	54%	49%

\$ Index Values

DTI (\$)	NMI (\$)
+\$26	+\$51

Purchaser:

\$:

38

KENMERE ROMULUS R155E (R/F)

Tattoo: MCS R155E Born: 19/06/2020

LT BLUEGRASS 4017P (OAU Z4017E) (P)
KENMERE CHOCK E12E (MCS E12E) (P)
KENMERE KRISTINA III FL87 (MCS M18E)

SIRE: KENMERE CHOCK N20E (MCS N20E) (P)

GOBONGO BOY G196E (GO G196E) (P)
KENMERE KIKO (MCS K19E) (P)
KENMERE GRACE (MCS G73E)

NELSON (OAF S8304F)
SEDALIA BORN WINNER (DEG B15F)
SEDALIA ULTIMATE FT27 (DEG U3F)

DAM: NARGOON WILMUR H017F (J5Y H17F)

INDIANA (OAF N393F)
NARGOON WILMUR 1 (J5Y B43F)
NARGOON WILMUR (J5Y W16F)

Comments: There is a lot to like about Romulus who is a meaty bull with smooth skin oozing softness and thickness throughout the length of his body that is typical for his sire Kenmere Chock N20E. Romulus is at the heavy end of the scales ahead of his age group. **EBV Percentiles: Top 20% CED, 15% CEDTR, 20% GL, 15% BW, 10% Milk, 15% SS, 20% Rib.**

	CE DIR	CE DTR	GL	BW	200	400	600	MCW	MILK	SS
EBV	+7.0	+5.5	-4.2	-1.6	+11	+15	+42	+46	+12	+1.8
Acc	48%	39%	46%	72%	65%	65%	68%	61%	49%	68%

	CW	EMA	RIB	RUMP	RBV	IMF
EBV	+22	+0.8	+1.2	+1.2	-0.7	-0.1
Acc	56%	46%	52%	51%	49%	45%

\$ Index Values

DTI (\$)	NMI (\$)
+\$19	+\$48



Purchaser:

\$:

39

KENMERE ROLAND R183E (P)

Tattoo: MCS R183E Born: 09/08/2020

MERIT VINTAGE 4065P (OAC -414E) (P)
CML DISTINCTION 318A (OAC J318E) (P)
TARGET PLD GINNY 40P (OAC Z486E) (P)

SIRE: CHARNELLE DISTINCTION N42E (GKA N42E) (P)

CHARNELLE FEDERATION (GKA F29E) (P)
CHARNELLE FESTOON 5 (GKA H58E) (P/S)
PALGROVE FESTOON 55 (PK T91E)

LT BLUEGRASS 4017P (OAU Z4017E) (P)
KENMERE CHOCK E12E (MCS E12E) (P)
KENMERE KRISTINA III FL87 (MCS M18E)

DAM: KENMERE MINNIE (MCS M7E)

KENMERE DAKOTA SPUR D9E (MCS D9E)
KENMERE HERRIOT (MCS H88E) (P)
GOBONGO ELODIE E117E (GO E117E) (P)

Comments: Roland has a great sires head and softness all throughout his meaty body. If you are looking for a sire with breeding figures Roland may be the bull for you. Dam's sire is bred by Kenmere Chock E12E. **EBV Percentiles: Top 5% CED, 20% GL, 15% BW, 10% 200D, 15% 400D, 10% 600D, 15% SS, 5% CWT, 5% DTI\$, 5% NMI\$.**

	CE DIR	CE DTR	GL	BW	200	400	600	MCW	MILK	SS
EBV	+16.3	+0.0	-4.2	-1.7	+19	+34	+52	+32	+7	+1.9
Acc	46%	36%	50%	72%	64%	66%	63%	60%	42%	73%

	CW	EMA	RIB	RUMP	RBV	IMF
EBV	+34	+2.1	+0.9	+0.8	-0.1	-0.1
Acc	55%	48%	52%	51%	51%	47%

\$ Index Values

DTI (\$)	NMI (\$)
+\$43	+\$85



Purchaser:

\$:

40 KENMERE LONG DISTANCE R178E (AI) (ET) (P)

HOMOZYGOUS
POLL - DNA

Tattoo: MCS R178E Born: 03/08/2020

LT SILVER YIELD 3196 (PED Y5495E) (P)
 LT SILVER DISTANCE 5342 (OAU A7559E) (P)
 LT MATTIE 9026 (OAU U2542E) (P)

SIRE: LT LONG DISTANCE 9001 (OAU E143E) (P)

LT EASY PRO 1158 PLD (OAU W6203E) (P)
 LT BELLE 7026 (OAU C9133E) (P)
 LT BELLE 5110 (OAU A5415E) (P)

LT ASSERTION 1277 (PED W1277F) (P)
 LT BLUEGRASS 4017P (OAU Z4017E) (P)
 LT PEARLS BREEZE 2236 (PED X2236F) (P)

DAM: KENMERE KRISTINA E19E (MCS E19E) (P)

MANDALONG CHOCK (RP C59E) (P/S)
 KENMERE KRISTINA III FL87 (MCS M18E)
 GILMANDYKE PARK KRISTINA 2ND (AGP N17F)

Comments: Kenmere Long Distance is a son of the AI sire LT Long Distance who is well known for easy care progeny that function in the Australian environment. A smooth shouldered, well balanced individual with cover of muscle throughout supported by great scan data. This sire has natural doing ability bred by one of our best cows Kenmere Kristina E19E. **EBV Percentiles: Top 5% CED, 5% GL, 5% BW, 1% Rib & Rump, 5% IMF%.**

	CE DIR	CE DTR	GL	BW	200	400	600	MCW	MILK	SS
EBV	+16.3	-1.7	-6.0	-3.1	+9	+9	+9	-1	+7	+0.6
Acc	55%	51%	60%	72%	65%	66%	66%	64%	59%	70%

	CW	EMA	RIB	RUMP	RBY	IMF
EBV	+3	-0.5	+3.6	+4.6	-3.2	+0.9
Acc	59%	53%	58%	58%	56%	53%

\$ Index Values

DTI (\$)	NMI (\$)
+\$12	+\$30



Purchaser:

\$:

41 KENMERE REMINGTON R78E (P)

HOMOZYGOUS
POLL - DNA

Tattoo: MCS R78E Born: 21/05/2020

LT WESTERN SPUR 2061 PLD (OAU X2061E) (P)
 KENMERE GILMAN KRISTO D17E E (MCS D17E)
 KENMERE KRISTINA III FL87 (MCS M18E)

SIRE: KENMERE KRISTO'S BOY (MCS N53E) (P)

KENMERE GRAND MASTER (MCS G6E) (P)
 KENMERE BLISSFUL J44E (MCS J44E) (P)
 KENMERE BLISSFUL (MCS E18E) (P)

PINAY (OAF U4134F)
 KENMERE PINAY J57E (MCS J57E) (P)
 KENMERE GOLDEN SPUR (MCS G3E) (P)

DAM: KENMERE QUE SERA N172 (MCS N172E) (P)

LT BLUEGRASS 4017P (OAU Z4017E) (P)
 KENMERE QUE SERA D22E (MCS D22E) (P)
 KENMERE QUE SERA (KNC Q18E) (P)

Comments: Kenmere Remington has a strong poll head and a moderate frame with even thickness and adequate muscle. The dam Kenmere Que Sera N172 originates from one of Kenmere's best milking females. **EBV Percentiles: Top 1% CED, 1% CEDTR, 5% GL, 1% BW, 5% Rib & Rump.**

	CE DIR	CE DTR	GL	BW	200	400	600	MCW	MILK	SS
EBV	+21.1	+11.7	-7.2	-6.5	+0	-12	-37	-50	+6	+1.1
Acc	46%	37%	45%	73%	65%	67%	71%	63%	43%	74%

	CW	EMA	RIB	RUMP	RBY	IMF
EBV	-11	+0.1	+2.1	+2.8	-1.9	+0.4
Acc	59%	50%	56%	55%	54%	50%

\$ Index Values

DTI (\$)	NMI (\$)
+\$1	+\$7



Purchaser:

\$:

42 KENMERE ROLLO R22E (P/S)

Tattoo: MCS R22E Born: 29/04/2020

PINAY (OAF U4134F)

KENMERE PINAY J57E (MCS J57E) (P)

KENMERE GOLDEN SPUR (MCS G3E) (P)

SIRE: KENMERE NUTRIENT (MCS N131E) (P)

SEDALIA BORN WINNER (DEG B15F)

NARGOON WILMUR H017F (J5Y H17F)

NARGOON WILMUR 1 (J5Y B43F)

LT BLUEGRASS 4017P (OAU Z4017E) (P)

KENMERE CHOCK E12E (MCS E12E) (P)

KENMERE KRISTINA III FL87 (MCS M18E)

DAM: KENMERE NATORI (MCS N30E) (P)

KENMERE GARRISON (MCS G9E) (P)

KENMERE JOAN (MCS J8E) (P)

KENMERE FUCHSIA (MCS F68E) (P)

Comments: Kenmere Rollo is a tidy medium frame polled bull whose sire Kenmere Nutrient has bred sons that have strong carcase traits. **EBV Percentiles: Top 10% CED, 20% GL, 10% BW, 20% RBV%.**

	CE DIR	CE DTR	GL	BW	200	400	600	MCW	MILK	SS
EBV	+10.0	+0.6	-4.3	-2.1	+2	+7	+5	+1	+9	+0.7
Acc	46%	37%	44%	73%	65%	67%	71%	63%	44%	73%

	CW	EMA	RIB	RUMP	RBV	IMF
EBV	+11	+1.7	-0.8	-1.2	+0.8	-0.1
Acc	58%	50%	56%	55%	54%	49%

\$ Index Values

DTI (\$)	NMI (\$)
+\$16	+\$13

Purchaser:

\$:

43 KENMERE RAJAH R80E (P)

Tattoo: MCS R80E Born: 31/05/2020

LT WESTERN SPUR 2061 PLD (OAU X2061E) (P)

KENMERE GILMAN KRISTO D17E E (MCS D17E)

KENMERE KRISTINA III FL87 (MCS M18E)

SIRE: KENMERE KRISTO'S BOY (MCS N53E) (P)

KENMERE GRAND MASTER (MCS G6E) (P)

KENMERE BLISSFUL J44E (MCS J44E) (P)

KENMERE BLISSFUL (MCS E18E) (P)

PCC SUDDEN IMPACT 848U (OAC D1017E) (P)

ROSEDALE KOOLY (MR K16E) (P)

ROSEDALE GOLDEN GIRL A34 (MR A34E) (P)

DAM: KENMERE NOVICE (MCS N33E)

KENMERE RADIATOR E90E (MCS E90E) (P)

KENMERE KEIRA (MCS K60E) (P)

KENMERE CORDELIA C55E (MCS C55E) (P)

Comments: Rajah is a bull with a real presence - compact smooth body on a medium frame packed with red meat EBV's suggest he has inherited his sires' Rib, Rump and IMF traits. **EBV Percentiles: Top 20% CED, 5% Rib & Rump, 10% IMF%.**

	CE DIR	CE DTR	GL	BW	200	400	600	MCW	MILK	SS
EBV	+6.1	+2.2	-1.9	-0.2	+10	+8	+6	+4	+6	-0.2
Acc	45%	35%	43%	72%	64%	67%	71%	63%	42%	73%

	CW	EMA	RIB	RUMP	RBV	IMF
EBV	+2	+0.0	+2.0	+2.6	-1.7	+0.7
Acc	58%	49%	55%	54%	53%	49%

\$ Index Values

DTI (\$)	NMI (\$)
+\$8	+\$12



Purchaser:

\$:

44 KENMERE ROWNING R71E (TW)

Tattoo: MCS R71E Born: 11/05/2020

LT WESTERN SPUR 2061 PLD (OAU X2061E) (P)
 KENMERE GILMAN KRISTO D17E E (MCS D17E)
 KENMERE KRISTINA III FL87 (MCS M18E)

SIRE: KENMERE KRISTO'S BOY (MCS N53E) (P)

KENMERE GRAND MASTER (MCS G6E) (P)
 KENMERE BLISSFUL J44E (MCS J44E) (P)
 KENMERE BLISSFUL (MCS E18E) (P)

MXS VERMILLION 527R (OAC A9214E) (P)
 MERIT ROUNDUP 9508W (OAC E6558E) (P)
 MERIT YOLANDA 7244T (PED -1301E)

DAM: KENMERE TANT MIEUX N49E (MCS N49E) (P)

GOBONGO BOY G196E (GO G196E) (P)
 KENMERE TANT MIEUX J69E (MCS J69E) (P)
 KENMERE TANT MIEUX G19E (MCS G19E) (P)

Comments: Rowning is a smooth wedge shaped soft bull who stands on sound feet with all the presence of a sire. **EBV Percentiles: Top 1% CED, 20% CEDTR, 10% BW.**

	CE DIR	CE DTR	GL	BW	200	400	600	MCW	MILK	SS
EBV	+17.6	+4.9	-3.9	-2.6	+8	+11	+3	-17	+2	+0.7
Acc	45%	36%	49%	69%	64%	67%	70%	61%	44%	73%

	CW	EMA	RIB	RUMP	RBY	IMF
EBV	+6	-0.6	+0.1	+0.0	-0.4	-0.2
Acc	58%	50%	55%	55%	53%	49%

\$ Index Values	
DTI (\$)	NMI (\$)
+\$20	+\$40



Purchaser:

\$:

45 KENMERE ROOSEVELT R153E (P)

Tattoo: MCS R153E Born: 19/06/2020

LT BLUEGRASS 4017P (OAU Z4017E) (P)
 KENMERE CHOCK E12E (MCS E12E) (P)
 KENMERE KRISTINA III FL87 (MCS M18E)

SIRE: KENMERE CHOCK N20E (MCS N20E) (P)

GOBONGO BOY G196E (GO G196E) (P)
 KENMERE KIKO (MCS K19E) (P)
 KENMERE GRACE (MCS G73E)

2UP PEUGEOT (2UP P46E) (P)
 NANDILLYAN PEUGEOT (F U1E) (P)
 ROSEDALE WALLAH Q69 (MR Q69E) (P)

DAM: KENMERE CALAMITY L22E (MCS L22E) (P)

ROSEDALE Y106E (MR Y106E) (P)
 KENMERE CALAMITY C56E (MCS C56E) (P)
 MINNIE-VALE PING A49E (SGS A49E) (P)

Comments: Roosevelt is a polled son of Kenmere Chock N20E that would suit breeders who produce early finishing vealers where rib, rump and fat are important for meat quality. It is hard to overlook this sire whose dam Kenmere Calamity L22E has been a sound breeder. **EBV Percentiles: Top 20% BW, 10% Milk, 1% Rib & Rump, 20% IMF%.**

	CE DIR	CE DTR	GL	BW	200	400	600	MCW	MILK	SS
EBV	+1.9	-4.6	-3.2	-1.1	+9	+11	+20	+21	+12	+1.6
Acc	49%	42%	47%	73%	66%	68%	71%	64%	48%	53%

	CW	EMA	RIB	RUMP	RBY	IMF
EBV	+9	+0.9	+3.2	+4.1	-2.0	+0.5
Acc	59%	41%	47%	47%	44%	40%

\$ Index Values	
DTI (\$)	NMI (\$)
+\$9	+\$24

Purchaser:

\$:

Kenmere Maternal Power



Nutrien Livestock.

Your Breeding Stock Specialists.

VICTORIA	Ray Attwell	0428 836 136
	Peter Godbolt	0457 591 929
	Stephen Chalmers	0427 908 831
	Nick Farley	0427 529 335
NEW SOUTH WALES	Rick Power	0437 131 925
	Tim Woodham	0436 015 115
	John Setttee	0408 297 368
	Brad Wilson	0417 467 911
QUEENSLAND	Colby Ede	0417 265 980
	Mark Scholes	0409 229 651
SOUTH AUSTRALIA	Richard Miller	0428 849 327
	Gordon Wood	0408 813 215
	Andrew Wilson	0439 354 228



NutrienAgSolutions.com.au

Nutrien
Livestock™

Rodwells
A NUTRIEN AG SOLUTIONS BUSINESS

Peter Ruaro
livestock & property



WODONGA	Peter Ruaro	0447 600 825
	Scott Campbell	0428 686 072
EUROA	Michael Curtis	0428 953 222
BENALLA	Justin Way	0429 625 513
	Adam Roberts	0409 122 388

www.rodwells.com.au

